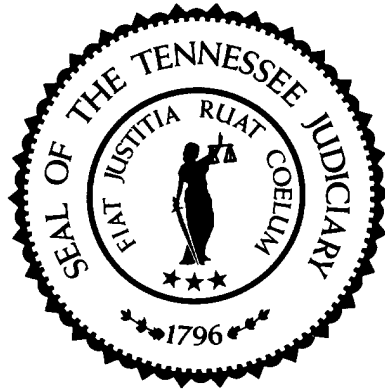


# Sentencing Practices in Tennessee



Administrative Office of the Courts

Information for Cases Sentenced  
Between July 1, 2011 and June 30, 2019

TDOC Data Extracted: January 2020  
Released: March 2020

# Sentencing Practices in Tennessee

## Table of Contents

Methodology	1
Sentence Type Information	
Class A	3
Class B	3
Class C	4
Class D	4
Class E	4
Average Incarceration Lengths in Months	
Class A	5
Rape of Child	6
Second Degree Murder	6
Especially Aggravated Kidnapping	7
Class B	8
Schedule II Cocaine	9
Aggravated Robbery	10
Aggravated Sexual Battery	11
Class C	12
Aggravated Burglary	13
Aggravated Assault	14
Schedule II Cocaine < ½ Gram	15
Schedule II Drugs: Max \$100,000 Fine	16
Class D	17
Theft: \$1,000 to \$10,000	18
Burglary Other Than Habitation	19
Identity Theft	20
Obtain Drugs by Fraud	21
Class E	22
Forgery: Up to \$1,000	23
Burglary: Auto	24
Theft: \$500 to \$1,000	25
Schedule VI Drugs: Not < ½ Ounce	26
Habitual Traffic Offender	27
Failure to Appear (Felony)	28
Average Probation Lengths in Months	
Class B	29
Class C	30
Class D	31
Class E	32
Average Split Sentence Lengths in Months	
Class B	33
Class C	34
Class D	35
Class E	36

## Methodology

The data used in evaluating sentencing practices comes from the Tennessee Department of Correction (TDOC); where individual offense data is captured. Each offense sentence is recorded individually, including cases of multiple offense convictions and eliminating the potential confusion in determining sentence lengths created by these multiple offense convictions. To establish a baseline for comparison purposes, data from multiple years was queried. The initial focus of this analysis consisted of cases where the defendants received incarceration only, either in a TDOC facility or a local jail. That has been expanded to include probation and alternative sentencing information as well. This data is not a sample, but is the entire population of sentences captured by the TDOC during the analyzed time frame.

Sentence lengths are reported for standard offenders, multiple offenders and for all offender types as a group from the body of convicted felons in the State Criminal or Circuit Criminal Courts. Standard and multiple offender defendant types were chosen because they comprise over 90% of all sentences in Tennessee.

Specific offenses are included in analysis first by choosing the top three most frequently occurring offenses in each felony class, then by a combination of occurrence frequency, overall impact on sentence length and by the increasing in frequency of the occurrence of the offense (i.e. the offense is happening in increasing amounts, but was not historically happening in large numbers). The following offenses make nearly 70% of convicted offenses and are included in the statistic table report.

### Class A

Rape of a Child

Second Degree Murder

Especially Aggravated Kidnapping

### Class B

Schedule II Drugs: Cocaine

Aggravated Robbery

Aggravated Sexual Battery

### Class C

Aggravated Burglary

Aggravated Assault

Schedule II Drugs: Cocaine < 1/2 Gram

Schedule II Drugs: Up to \$100,000 Fine

### Class D

Theft: \$1,000 to \$10,000

Burglary: Other than Habitation or Auto

Identity Theft

Obtain Drugs by Fraud

### Class E

Forgery: Up to \$1,000

Burglary: Auto

Theft: \$500 to \$1,000

Schedule VI Drugs: Not Less than ½

Ounce Habitual Traffic Offender

Failure to Appear (Felony)

Data for each felony class and defendant type (standard, multiple and all) are presented as well. The tables for the offenses listed and for the felony classes display the mean and median sentence lengths in months, the standard deviation, and the number of convictions for each year reported. This report contains basic incarceration, probation and alternative sentencing information and can be used for the following: .

- analyzing trends
- evaluating the effectiveness of legislation aimed at reducing incarceration rates

Given that this data does not include demographic information; it cannot be used to evaluate any scenarios or trends that involve demographic references.

### **Note**

The numbers presented here and in previous reports may vary for the same years. Discrepancies are due in part to delayed reporting to the Tennessee Department of Corrections and parole violations over time. Also, due to delayed reporting to TDOC, the total population in recent years may not be included in the analysis at the time of publication.

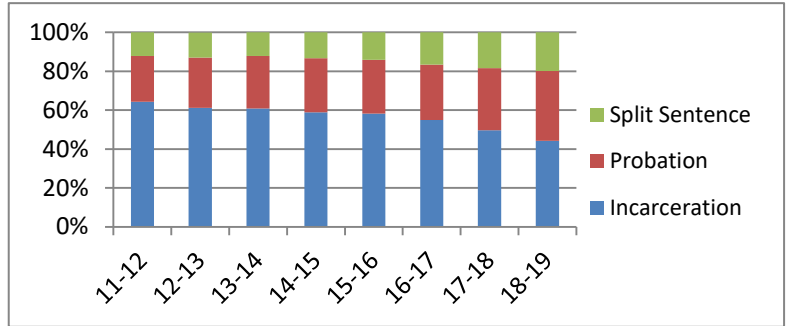


# Sentence Type Information

Note: Column N Indicates the number of felony convictions. Individual offenders can have multiple convictions. Incarceration includes life without parole and death sentences. Probation includes sentences to community corrections.

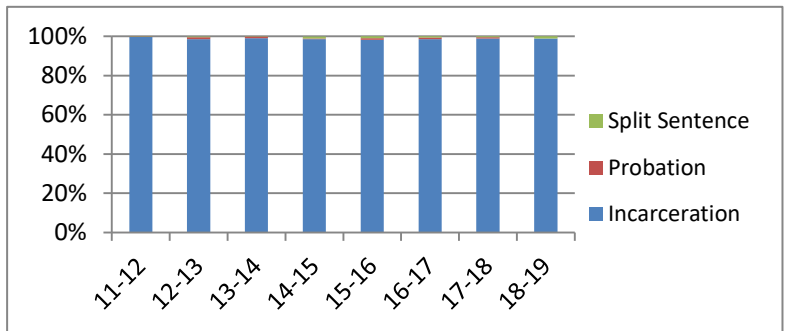
**Percent of Sentence Type - All Felony Classes - All Offenders**

Fiscal Year	Incarceration	Probation	Split Sentence	N
	Percent	Percent	Percent	
11-12	64.4%	23.4%	12.2%	43,361
12-13	61.2%	25.9%	12.8%	40,641
13-14	60.9%	26.9%	12.2%	37,859
14-15	58.9%	27.8%	13.3%	34,663
15-16	58.3%	27.6%	14.1%	35,045
16-17	54.9%	28.6%	16.5%	34,990
17-18	49.6%	32.0%	18.4%	33,153
18-19	44.2%	36.0%	19.8%	32,098



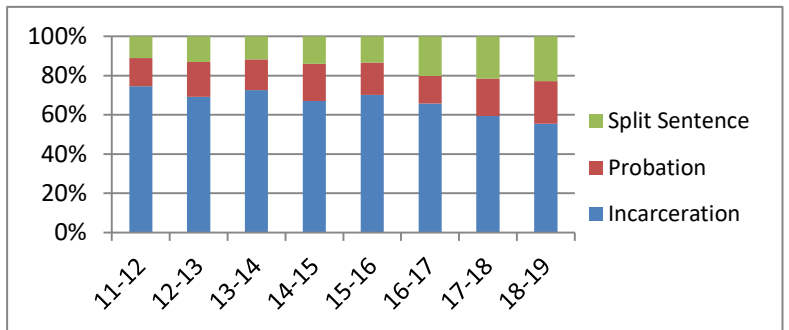
**Percent of Sentence Type - Felony Class A - All Offenders**

Fiscal Year	Incarceration	Probation	Split Sentence	N
	Percent	Percent	Percent	
11-12	99.7%	0.2%	0.2%	648
12-13	98.6%	1.0%	0.3%	584
13-14	99.0%	0.9%	0.2%	586
14-15	98.5%	0.4%	1.0%	482
15-16	98.2%	0.9%	0.9%	554
16-17	98.5%	0.9%	0.6%	544
17-18	98.8%	0.7%	0.5%	581
18-19	98.8%	0.0%	1.2%	517



**Percent of Sentence Type - Felony Class B - All Offenders**

Fiscal Year	Incarceration	Probation	Split Sentence	N
	Percent	Percent	Percent	
11-12	74.6%	14.3%	11.1%	3,877
12-13	69.1%	17.8%	13.1%	3,464
13-14	72.6%	15.7%	11.7%	3,099
14-15	67.1%	18.8%	14.2%	3,017
15-16	70.2%	16.5%	13.3%	3,203
16-17	65.8%	14.0%	20.2%	3,597
17-18	59.4%	19.0%	21.6%	3,792
18-19	55.4%	21.8%	22.9%	4,224

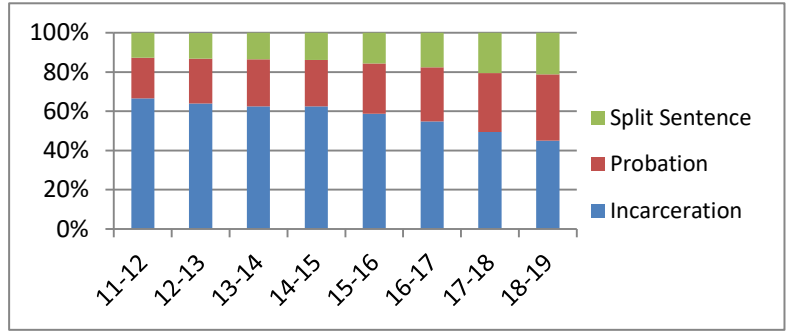


# Sentence Type Information

Note: Column N Indicates the number of felony convictions. Individual offenders can have multiple convictions. Incarceration includes life without parole and death sentences. Probation includes sentences to community corrections.

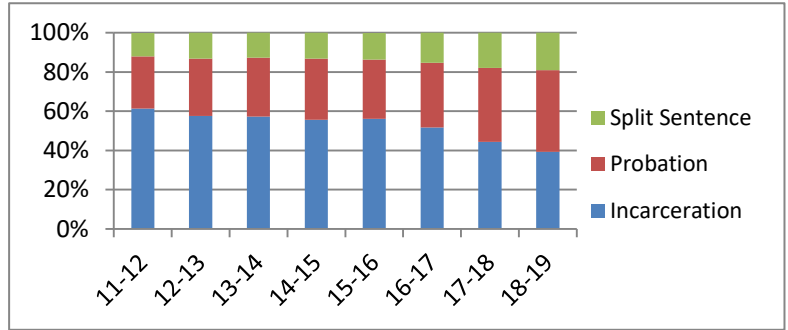
## Percent of Sentence Type - Felony Class C - All Offenders

Fiscal Year	Incarceration	Probation	Split Sentence	N
	Percent	Percent	Percent	
11-12	66.5%	20.8%	12.7%	11,651
12-13	63.9%	22.9%	13.1%	10,577
13-14	62.5%	23.9%	13.6%	10,106
14-15	62.5%	23.6%	13.9%	9,239
15-16	58.8%	25.6%	15.6%	9,709
16-17	54.9%	27.5%	17.6%	10,068
17-18	49.5%	29.9%	20.6%	9,975
18-19	45.1%	33.7%	21.2%	9,881



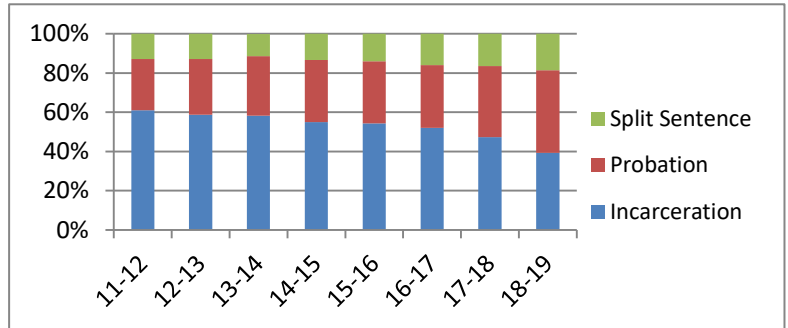
## Percent of Sentence Type - Felony Class D - All Offenders

Fiscal Year	Incarceration	Probation	Split Sentence	N
	Percent	Percent	Percent	
11-12	61.4%	26.5%	12.0%	13,188
12-13	57.6%	29.2%	13.2%	12,347
13-14	57.2%	30.1%	12.7%	11,407
14-15	55.7%	31.1%	13.2%	10,540
15-16	56.2%	30.1%	13.6%	10,009
16-17	51.8%	32.8%	15.4%	9,640
17-18	44.4%	37.6%	18.1%	7,761
18-19	39.4%	41.5%	19.1%	7,295



## Percent of Sentence Type - Felony Class E - All Offenders

Fiscal Year	Incarceration	Probation	Split Sentence	N
	Percent	Percent	Percent	
11-12	61.0%	26.2%	12.8%	13,997
12-13	58.8%	28.4%	12.8%	13,669
13-14	58.2%	30.4%	11.3%	12,661
14-15	55.0%	31.6%	13.4%	11,385
15-16	54.3%	31.7%	14.1%	11,570
16-17	52.0%	32.0%	16.0%	11,141
17-18	47.3%	36.2%	16.5%	11,044
18-19	39.4%	42.0%	18.6%	10,181

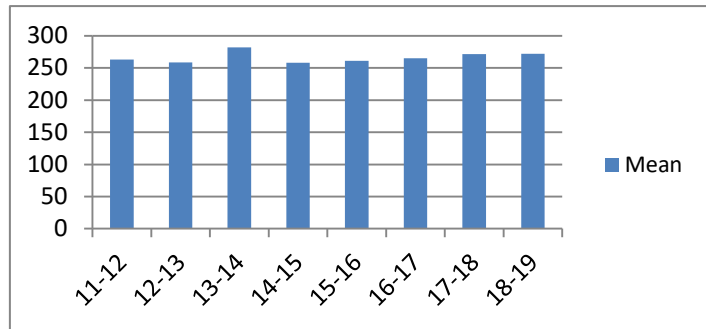


## Average Incarceration Lengths in Months by Felony Class and Offense

Note: Column N indicates the number of felony convictions. Individual offenders can have multiple convictions. Incarceration includes life without parole and death sentences. Probation includes sentences to community corrections.

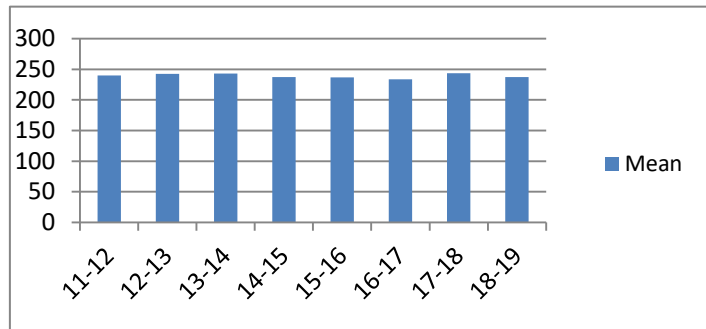
**Average Incarceration Length - Class A -  
All Offenders**

Fiscal Year	Mean	Median	Standard Deviation	N
11-12	263.01	240.00	97.33	644
12-13	258.25	240.00	83.63	573
13-14	282.08	258.00	117.54	580
14-15	257.97	240.00	89.41	474
15-16	260.94	240.00	93.64	543
16-17	264.81	240.00	96.81	532
17-18	271.33	264.00	90.64	573
18-19	272.08	240.00	96.45	511



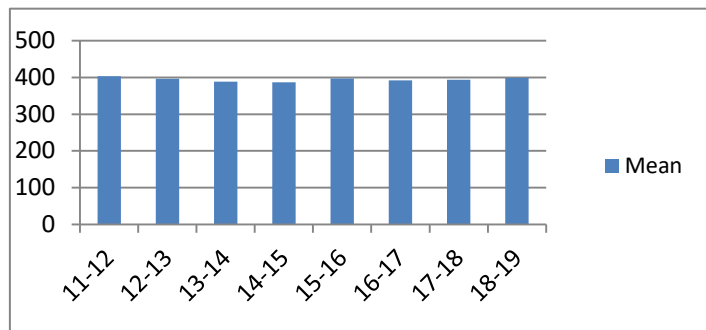
**Average Incarceration Length - Class A -  
Standard Offenders**

Fiscal Year	Mean	Median	Standard Deviation	N
11-12	239.88	240.00	48.25	494
12-13	242.65	240.00	50.96	478
13-14	243.32	240.00	49.15	419
14-15	237.33	240.00	53.45	373
15-16	236.85	240.00	53.70	429
16-17	233.75	240.00	52.49	410
17-18	243.43	240.00	48.40	449
18-19	237.38	240.00	52.01	387



**Average Incarceration Length - Class A -  
Multiple Offenders**

Fiscal Year	Mean	Median	Standard Deviation	N
11-12	403.36	384.00	56.59	75
12-13	396.42	420.00	86.35	57
13-14	389.11	360.00	77.29	101
14-15	386.86	384.00	104.00	67
15-16	397.68	384.00	68.49	75
16-17	392.56	360.00	54.69	89
17-18	393.84	360.00	57.79	89
18-19	399.50	360.00	54.48	96

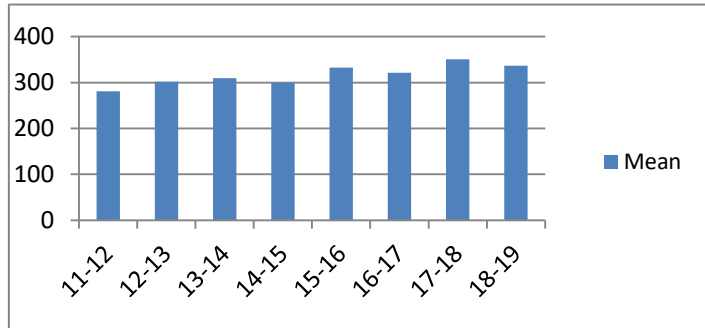


## Average Incarceration Lengths in Months by Felony Class and Offense

Note: Column N indicates the number of felony convictions. Individual offenders can have multiple convictions. Incarceration includes life without parole and death sentences. Probation includes sentences to community corrections.

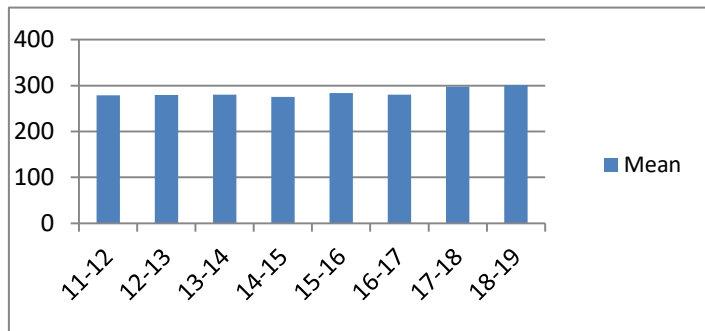
**Average Incarceration Length - Rape of a Child - All Offenders**

Fiscal Year	Mean	Median	Standard Deviation	N
11-12	281.21	300.00	41.26	99
12-13	301.93	300.00	66.23	81
13-14	309.51	300.00	62.40	111
14-15	299.68	300.00	63.47	75
15-16	332.40	300.00	92.71	70
16-17	321.13	300.00	67.12	117
17-18	350.79	300.00	72.14	99
18-19	336.84	318.00	43.55	86



**Average Incarceration Length - Rape of a Child - Standard Offenders**

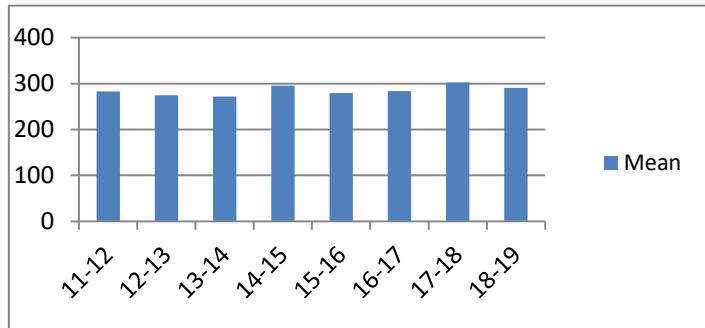
Fiscal Year	Mean	Median	Standard Deviation	N
11-12	279.18	300.00	36.17	98
12-13	279.40	300.00	42.49	67
13-14	280.31	300.00	41.12	78
14-15	275.58	300.00	42.24	57
15-16	283.81	300.00	33.01	43
16-17	280.56	300.00	41.54	71
17-18	297.82	300.00	11.34	55
18-19	301.36	300.00	9.05	44



The table for multiple offenders was not included due to low occurrence frequencies.

**Average Incarceration Length - Second Degree Murder - All Offenders**

Fiscal Year	Mean	Median	Standard Deviation	N
11-12	283.02	240.00	102.48	118
12-13	274.50	270.00	90.19	84
13-14	271.87	264.00	73.68	93
14-15	295.62	300.00	103.64	78
15-16	279.46	246.00	96.55	112
16-17	284.00	240.00	96.37	105
17-18	302.72	300.00	102.67	97
18-19	290.84	288.00	98.97	129

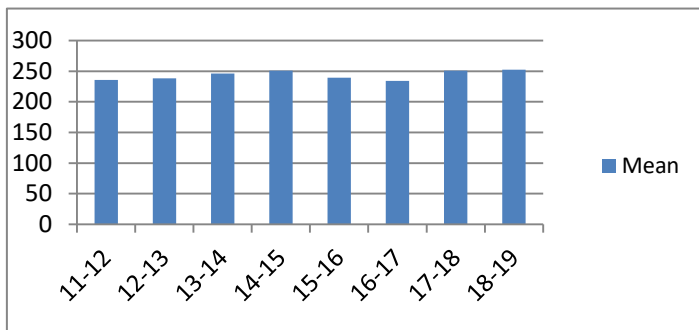


## Average Incarceration Lengths in Months by Felony Class and Offense

Note: Column N indicates the number of felony convictions. Individual offenders can have multiple convictions. Incarceration includes life without parole and death sentences. Probation includes sentences to community corrections.

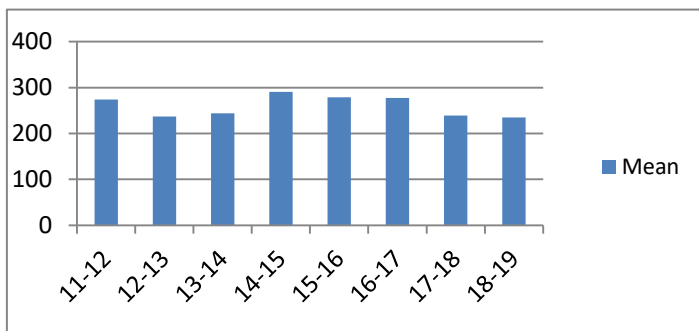
### Average Incarceration Length - Second Degree Murder - Standard Offenders

Fiscal Year	Mean	Median	Standard Deviation	N
11-12	235.67	240.00	44.38	79
12-13	238.19	240.00	49.54	63
13-14	246.08	240.00	47.12	73
14-15	251.25	240.00	44.72	48
15-16	239.29	240.00	44.99	80
16-17	234.40	240.00	46.74	75
17-18	250.98	252.00	45.52	59
18-19	252.66	240.00	44.56	100



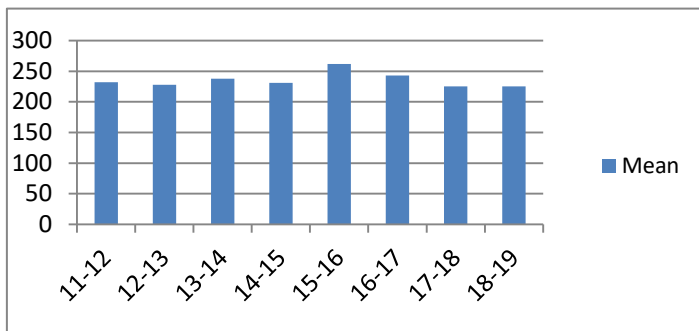
### Average Incarceration Length - Especially Aggravated Kidnapping - All Offenders

Fiscal Year	Mean	Median	Standard Deviation	N
11-12	274.16	240.00	117.01	88
12-13	237.26	240.00	67.66	68
13-14	243.86	240.00	88.41	42
14-15	290.57	264.00	117.33	35
15-16	278.78	300.00	100.93	67
16-17	277.69	240.00	135.07	39
17-18	239.27	240.00	61.62	33
18-19	235.07	228.00	65.53	45



### Average Incarceration Length - Especially Aggravated Kidnapping - Standard Offenders

Fiscal Year	Mean	Median	Standard Deviation	N
11-12	232.21	240.00	45.17	67
12-13	228.20	240.00	46.76	61
13-14	237.79	240.00	44.19	38
14-15	231.36	240.00	53.28	25
15-16	261.80	300.00	56.78	60
16-17	243.09	240.00	38.76	35
17-18	225.20	210.00	43.06	30
18-19	225.16	222.00	42.81	38

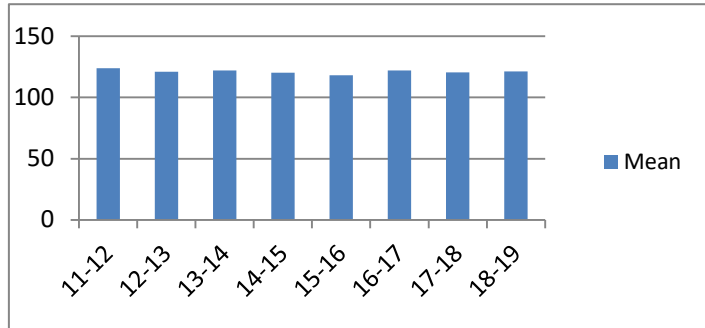


## Average Incarceration Lengths in Months by Felony Class and Offense

Note: Column N indicates the number of felony convictions. Individual offenders can have multiple convictions. Incarceration includes life without parole and death sentences. Probation includes sentences to community corrections.

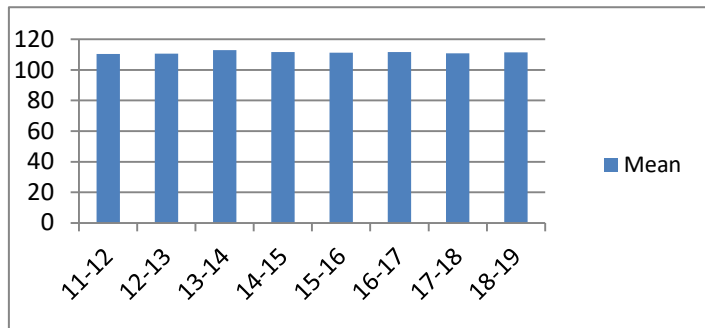
**Average Incarceration Length - Felony Class B - All Offenders**

Fiscal Year	Mean	Median	Standard Deviation	N
11-12	123.92	108.00	44.53	2,891
12-13	120.94	108.00	41.36	2,392
13-14	122.02	120.00	39.97	2,251
14-15	120.14	108.00	36.42	2,023
15-16	118.07	108.00	36.07	2,247
16-17	122.06	114.00	38.65	2,366
17-18	120.40	108.00	38.41	2,251
18-19	121.44	108.00	40.32	2,329



**Average Incarceration Length - Felony Class B - Standard Offenders**

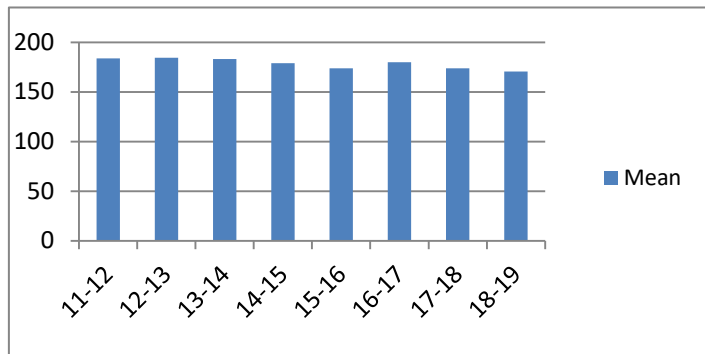
Fiscal Year	Mean	Median	Standard Deviation	N
11-12	110.43	96.00	20.13	2,267
12-13	110.61	96.00	18.61	2,018
13-14	113.05	108.00	20.79	1,921
14-15	111.70	108.00	20.16	1,719
15-16	111.26	96.00	18.91	1,884
16-17	111.61	108.00	19.77	1,962
17-18	110.83	96.00	19.73	1,863
18-19	111.41	96.00	23.07	1,908



The table for multiple offenders was not included due to low occurrence frequencies

**Average Incarceration Length - Felony Class B - Multiple Offenders**

Fiscal Year	Mean	Median	Standard Deviation	N
11-12	183.58	180.00	35.80	414
12-13	184.24	180.00	43.00	239
13-14	183.23	180.00	40.36	199
14-15	178.78	180.00	43.30	226
15-16	173.86	180.00	34.27	221
16-17	180.00	180.00	40.51	309
17-18	173.68	180.00	37.09	262
18-19	170.62	168.00	40.55	307

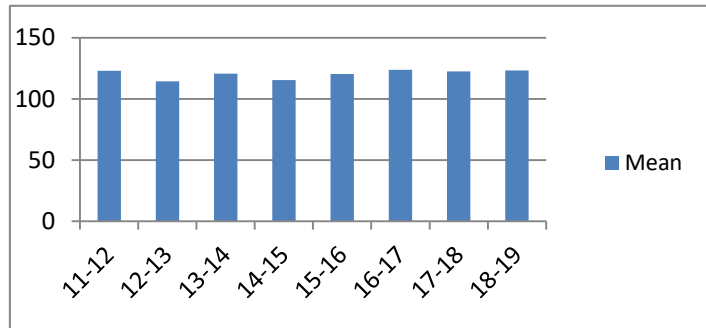


## Average Incarceration Lengths in Months by Felony Class and Offense

Note: Column N indicates the number of felony convictions. Individual offenders can have multiple convictions. Incarceration includes life without parole and death sentences. Probation includes sentences to community corrections.

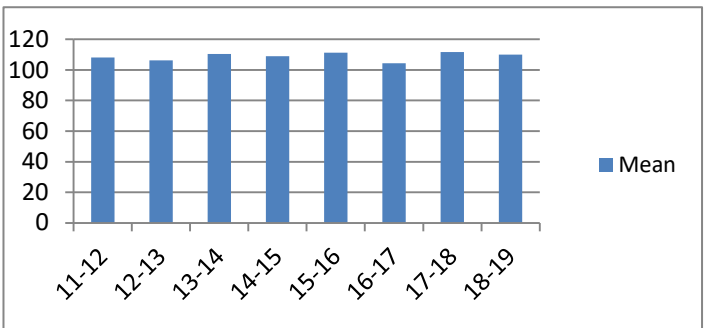
### Average Incarceration Length - Schedule II Cocaine - All Offenders

Fiscal Year	Mean	Median	Standard Deviation	N
11-12	123.17	108.00	46.52	555
12-13	114.57	96.00	30.32	470
13-14	120.83	108.00	36.95	376
14-15	115.60	108.00	32.70	323
15-16	120.55	120.00	35.30	206
16-17	123.87	96.00	44.84	188
17-18	122.44	108.00	38.13	191
18-19	123.48	108.00	39.98	206



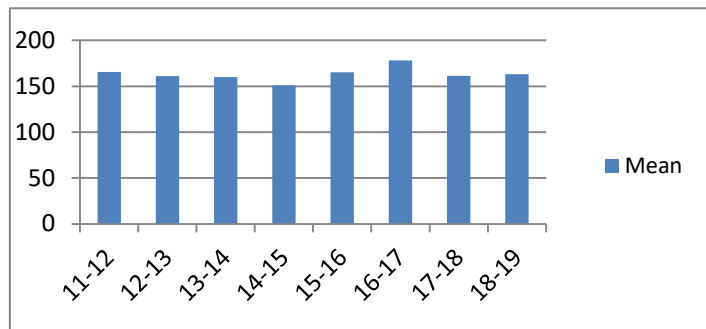
### Average Incarceration Length - Schedule II Cocaine - Standard Offenders

Fiscal Year	Mean	Median	Standard Deviation	N
11-12	108.11	96.00	21.53	449
12-13	106.17	96.00	17.88	391
13-14	110.42	96.00	19.60	310
14-15	108.91	96.00	21.20	278
15-16	111.26	108.00	19.07	173
16-17	104.48	96.00	15.29	138
17-18	111.67	108.00	22.34	152
18-19	109.96	96.00	18.20	163



### Average Incarceration Length - Schedule II Cocaine - Multiple Offenders

Fiscal Year	Mean	Median	Standard Deviation	N
11-12	165.63	150.00	34.58	86
12-13	160.96	144.00	38.62	69
13-14	160.08	144.00	31.13	53
14-15	150.83	144.00	40.75	36
15-16	165.33	168.00	37.85	27
16-17	178.00	180.00	41.98	42
17-18	161.29	144.00	35.10	34
18-19	163.20	156.00	23.68	35

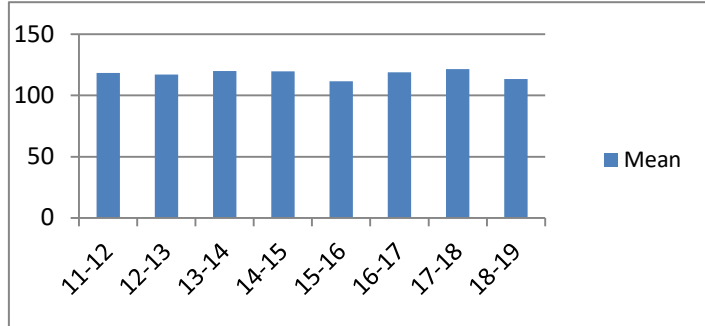


## Average Incarceration Lengths in Months by Felony Class and Offense

Note: Column N indicates the number of felony convictions. Individual offenders can have multiple convictions. Incarceration includes life without parole and death sentences. Probation includes sentences to community corrections.

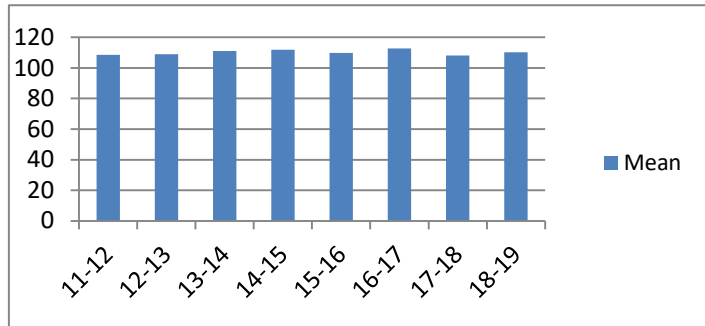
### Average Incarceration Length - Aggravated Robbery - All Offenders

Fiscal Year	Mean	Median	Standard Deviation	N
11-12	118.54	96.00	48.22	639
12-13	117.04	96.00	42.07	508
13-14	120.00	96.00	42.92	501
14-15	119.63	108.00	40.30	410
15-16	111.57	96.00	29.84	515
16-17	119.07	108.00	39.56	429
17-18	121.64	96.00	45.42	458
18-19	113.47	96.00	32.71	341



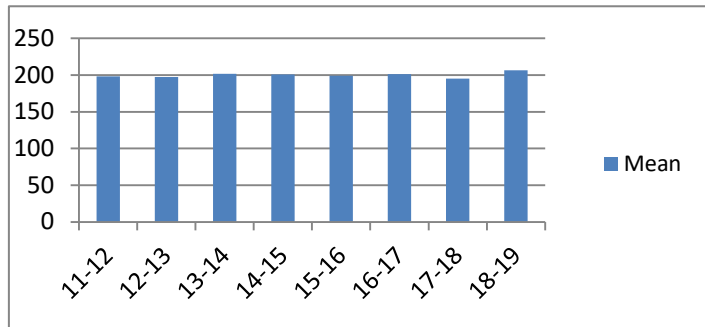
### Average Incarceration Length - Aggravated Robbery - Standard Offenders

Fiscal Year	Mean	Median	Standard Deviation	N
11-12	108.64	96.00	18.00	461
12-13	109.08	96.00	17.60	401
13-14	111.16	96.00	18.12	408
14-15	111.98	108.00	19.12	333
15-16	109.85	96.00	19.62	439
16-17	112.67	108.00	19.10	360
17-18	108.17	96.00	17.52	325
18-19	110.21	96.00	22.03	285



### Average Incarceration Length - Aggravated Robbery - Multiple Offenders

Fiscal Year	Mean	Median	Standard Deviation	N
11-12	198.11	180.00	34.55	55
12-13	197.37	180.00	35.59	38
13-14	201.63	216.00	36.26	38
14-15	200.73	180.00	29.70	33
15-16	199.00	201.00	22.57	18
16-17	201.11	204.00	34.84	27
17-18	195.29	192.00	24.02	62
18-19	206.53	216.00	26.41	19



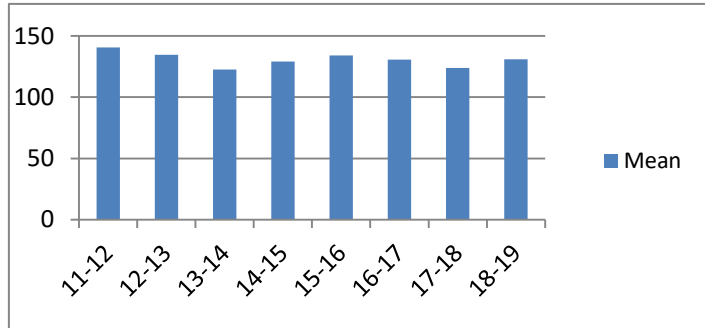


## Average Incarceration Lengths in Months by Felony Class and Offense

Note: Column N indicates the number of felony convictions. Individual offenders can have multiple convictions. Incarceration includes life without parole and death sentences. Probation includes sentences to community corrections.

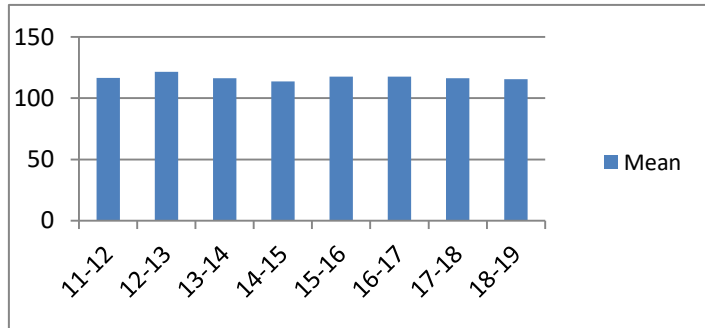
**Average Incarceration Length -  
Aggravated Sexual Battery -  
All Offenders**

Fiscal Year	Mean	Median	Standard Deviation	N
11-12	140.77	120.00	39.62	383
12-13	134.69	120.00	38.27	217
13-14	122.71	120.00	34.33	183
14-15	129.24	120.00	41.85	168
15-16	134.19	120.00	40.12	139
16-17	130.61	120.00	39.30	247
17-18	123.93	120.00	32.84	217
18-19	131.10	120.00	48.36	217



**Average Incarceration Length -  
Aggravated Sexual Battery -  
Standard Offenders**

Fiscal Year	Mean	Median	Standard Deviation	N
11-12	116.65	120.00	16.04	251
12-13	121.62	120.00	19.29	181
13-14	116.32	120.00	18.26	163
14-15	113.61	108.00	16.99	139
15-16	117.60	120.00	18.84	105
16-17	117.77	120.00	19.21	210
17-18	116.40	120.00	18.17	200
18-19	115.50	120.00	18.29	184



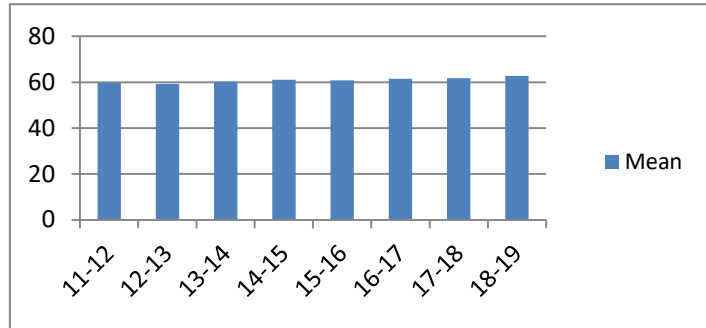
The table for multiple offenders was not included due to low occurrence frequencies.

## Average Incarceration Lengths in Months by Felony Class and Offense

Note: Column N indicates the number of felony convictions. Individual offenders can have multiple convictions. Incarceration includes life without parole and death sentences. Probation includes sentences to community corrections.

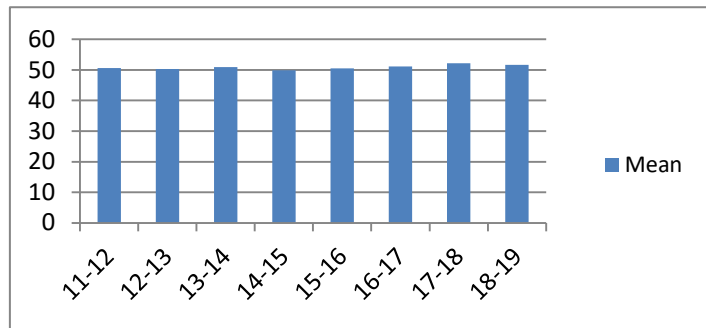
**Average Incarceration Length - Class C -  
All Offenders**

Fiscal Year	Mean	Median	Standard Deviation	N
11-12	59.68	48.00	28.41	7,748
12-13	59.21	48.00	28.01	6,762
13-14	60.17	53.50	27.60	6,318
14-15	61.04	48.00	30.39	5,778
15-16	60.83	48.00	28.50	5,711
16-17	61.43	54.00	28.77	5,532
17-18	61.72	60.00	28.69	4,938
18-19	62.73	60.00	29.79	4,456



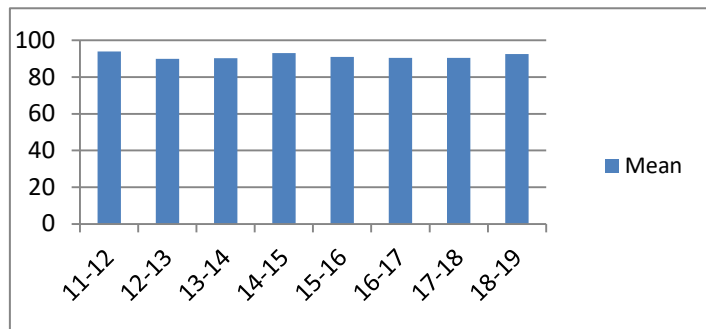
**Average Incarceration Length - Class C -  
Standard Offenders**

Fiscal Year	Mean	Median	Standard Deviation	N
11-12	50.67	48.00	16.81	6,382
12-13	50.27	48.00	15.63	5,540
13-14	50.95	48.00	15.88	5,112
14-15	49.92	48.00	16.51	4,559
15-16	50.53	48.00	16.78	4,503
16-17	51.12	48.00	16.26	4,383
17-18	52.16	48.00	16.85	3,977
18-19	51.71	48.00	17.33	3,446



**Average Incarceration Length - Class C -  
Multiple Offenders**

Fiscal Year	Mean	Median	Standard Deviation	N
11-12	94.02	96.00	21.82	1,035
12-13	89.92	96.00	21.83	915
13-14	90.25	90.00	19.86	943
14-15	93.05	96.00	22.15	935
15-16	91.01	90.00	20.99	930
16-17	90.46	96.00	20.17	868
17-18	90.49	96.00	20.29	731
18-19	92.56	96.00	21.01	805

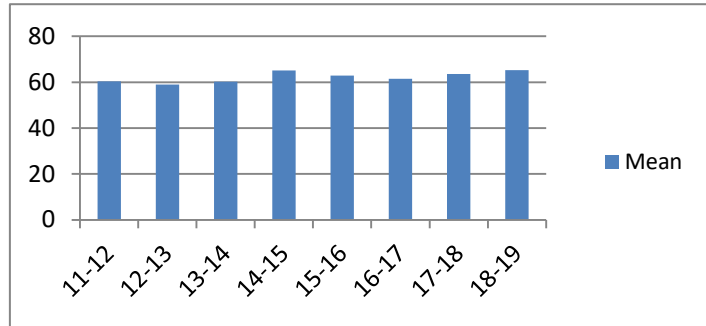


## Average Incarceration Lengths in Months by Felony Class and Offense

Note: Column N indicates the number of felony convictions. Individual offenders can have multiple convictions. Incarceration includes life without parole and death sentences. Probation includes sentences to community corrections.

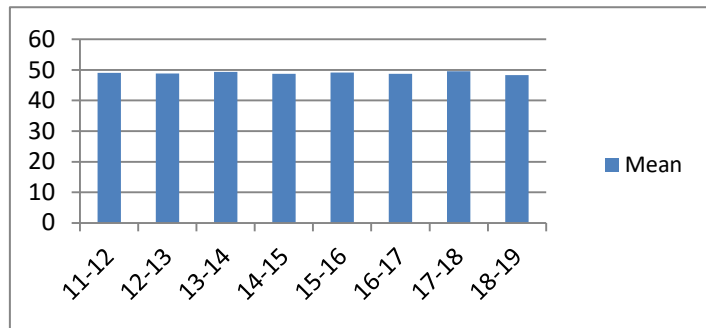
### Average Incarceration Length - Aggravated Burglary - All Offenders

Fiscal Year	Mean	Median	Standard Deviation	N
11-12	60.36	48.00	30.24	2,380
12-13	59.04	48.00	30.08	2,055
13-14	60.25	48.00	29.06	1,779
14-15	65.15	48.00	34.11	1,631
15-16	62.84	48.00	31.02	1,478
16-17	61.46	48.00	30.62	1,190
17-18	63.52	54.00	32.96	877
18-19	65.32	60.00	33.87	725



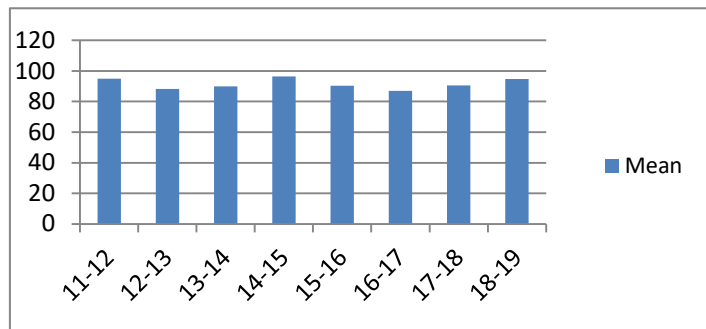
### Average Incarceration Length - Aggravated Burglary - Standard Offenders

Fiscal Year	Mean	Median	Standard Deviation	N
11-12	49.05	48.00	15.13	1,902
12-13	48.84	48.00	14.31	1,663
13-14	49.41	48.00	14.24	1,404
14-15	48.70	48.00	16.84	1,162
15-16	49.12	48.00	14.08	1,092
16-17	48.71	48.00	14.38	903
17-18	49.57	48.00	15.16	660
18-19	48.34	48.00	14.46	506



### Average Incarceration Length - Aggravated Burglary - Multiple Offenders

Fiscal Year	Mean	Median	Standard Deviation	N
11-12	95.04	96.00	21.54	330
12-13	88.33	84.00	20.93	273
13-14	89.96	84.00	19.74	286
14-15	96.38	96.00	21.91	369
15-16	90.44	84.00	22.88	288
16-17	87.08	84.00	18.42	206
17-18	90.66	96.00	19.71	154
18-19	94.85	96.00	20.87	178

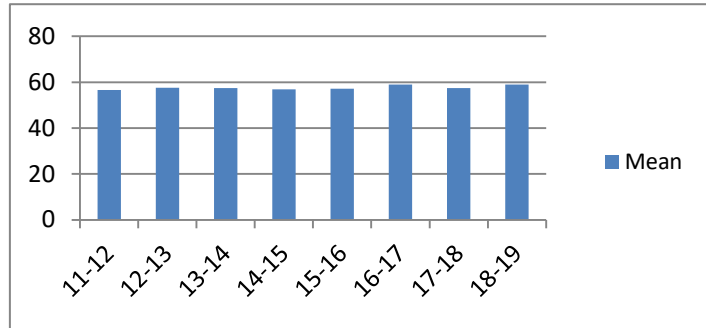


## Average Incarceration Lengths in Months by Felony Class and Offense

Note: Column N indicates the number of felony convictions. Individual offenders can have multiple convictions. Incarceration includes life without parole and death sentences. Probation includes sentences to community corrections.

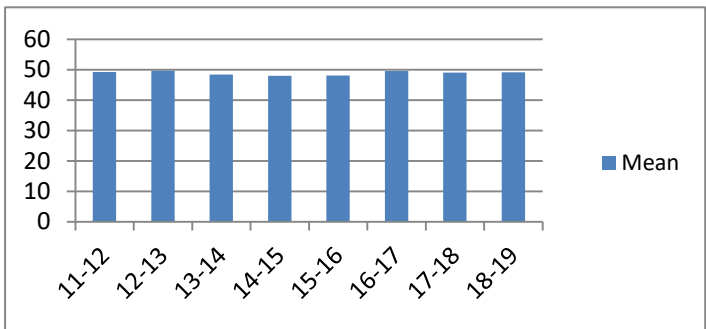
### Average Incarceration Length - Aggravated Assault - All Offenders

Fiscal Year	Mean	Median	Standard Deviation	N
11-12	56.60	48.00	26.62	1,118
12-13	57.61	48.00	26.70	1,138
13-14	57.44	48.00	26.45	1,023
14-15	56.95	48.00	26.71	1,019
15-16	57.20	48.00	27.93	1,144
16-17	58.96	48.00	26.91	1,081
17-18	57.44	48.00	26.58	1,019
18-19	58.96	48.00	27.01	963



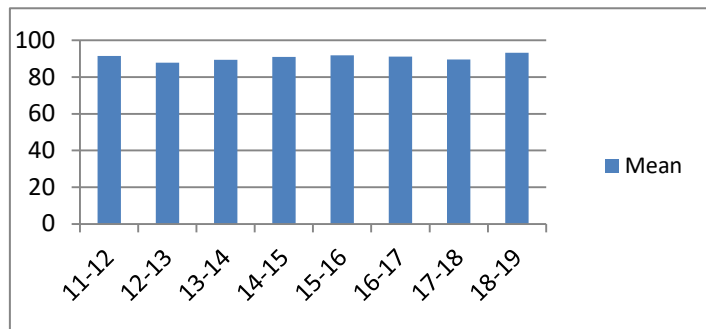
### Average Incarceration Length - Aggravated Assault - Standard Offenders

Fiscal Year	Mean	Median	Standard Deviation	N
11-12	49.31	48.00	16.39	953
12-13	49.65	48.00	15.27	951
13-14	48.39	48.00	14.21	830
14-15	48.03	36.00	14.64	840
15-16	48.09	36.00	16.66	937
16-17	49.57	48.00	15.39	876
17-18	49.06	48.00	15.31	844
18-19	49.12	48.00	15.96	761



### Average Incarceration Length - Aggravated Assault - Multiple Offenders

Fiscal Year	Mean	Median	Standard Deviation	N
11-12	91.60	96.00	21.49	136
12-13	87.91	96.00	20.98	151
13-14	89.50	84.00	21.00	167
14-15	90.95	96.00	20.70	139
15-16	91.85	84.00	21.80	157
16-17	91.25	96.00	19.74	153
17-18	89.59	84.00	20.21	140
18-19	93.32	96.00	23.53	174

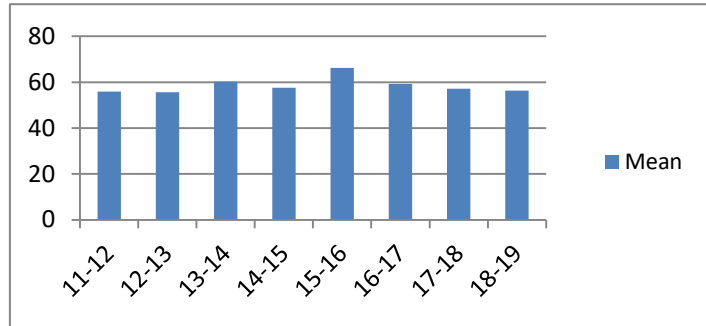


## Average Incarceration Lengths in Months by Felony Class and Offense

Note: Column N indicates the number of felony convictions. Individual offenders can have multiple convictions. Incarceration includes life without parole and death sentences. Probation includes sentences to community corrections.

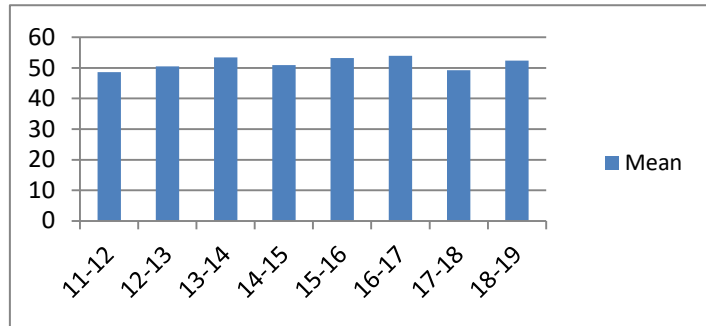
### Average Incarceration Length - Schedule II Cocaine < 1/2 Gram - All Offenders

Fiscal Year	Mean	Median	Standard Deviation	N
11-12	55.93	48.00	24.17	813
12-13	55.68	48.00	20.82	351
13-14	60.19	60.00	22.01	324
14-15	57.64	54.00	24.58	262
15-16	66.17	60.00	32.76	187
16-17	59.21	60.00	23.72	159
17-18	57.22	48.00	23.87	107
18-19	56.35	48.00	24.27	95



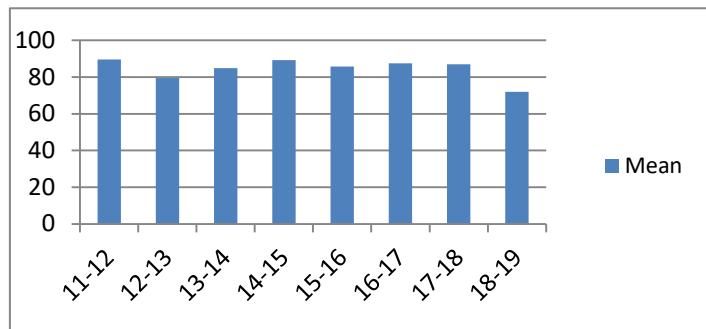
### Average Incarceration Length - Schedule II Cocaine < 1/2 Gram - Standard Offenders

Fiscal Year	Mean	Median	Standard Deviation	N
11-12	48.60	48.00	14.85	651
12-13	50.54	48.00	14.01	296
13-14	53.46	48.00	17.15	255
14-15	50.92	48.00	14.90	222
15-16	53.27	48.00	17.26	139
16-17	54.00	48.00	18.23	137
17-18	49.26	48.00	14.78	87
18-19	52.39	48.00	15.93	85



### Average Incarceration Length - Schedule II Cocaine < 1/2 Gram - Multiple Offenders

Fiscal Year	Mean	Median	Standard Deviation	N
11-12	89.55	84.00	23.57	130
12-13	79.56	72.00	19.88	48
13-14	84.91	72.00	19.56	66
14-15	89.31	84.00	17.50	26
15-16	85.71	72.00	22.38	35
16-17	87.43	72.00	20.83	21
17-18	87.06	72.50	23.35	16
18-19	72.00	72.00	0.00	6

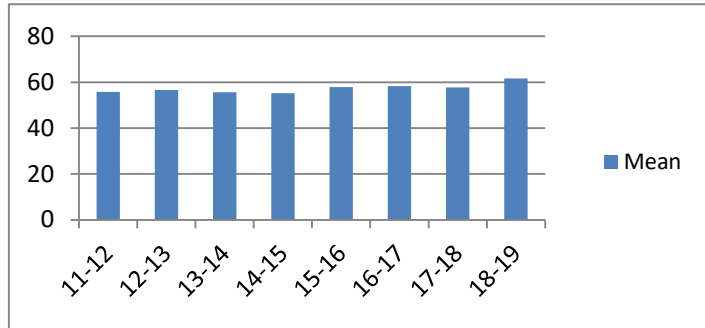


## Average Incarceration Lengths in Months by Felony Class and Offense

Note: Column N indicates the number of felony convictions. Individual offenders can have multiple convictions. Incarceration includes life without parole and death sentences. Probation includes sentences to community corrections.

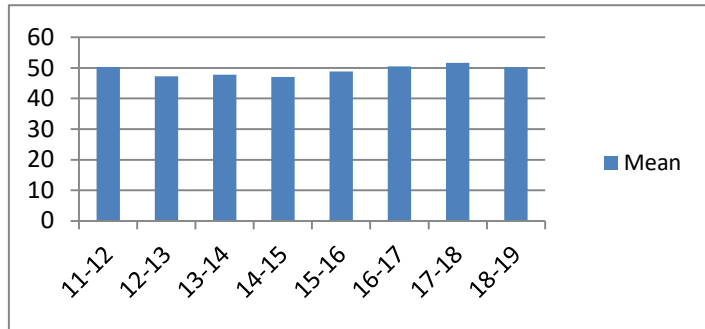
**Average Incarceration Length - Schedule II Drugs:  
Max \$100,000 Fine - All Offenders**

Fiscal Year	Mean	Median	Standard Deviation	N
11-12	55.81	48.00	22.86	972
12-13	56.64	48.00	25.96	845
13-14	55.67	48.00	23.65	868
14-15	55.24	48.00	31.62	608
15-16	57.90	48.00	25.00	553
16-17	58.33	48.00	25.40	517
17-18	57.79	48.00	23.28	358
18-19	61.57	48.00	29.27	303



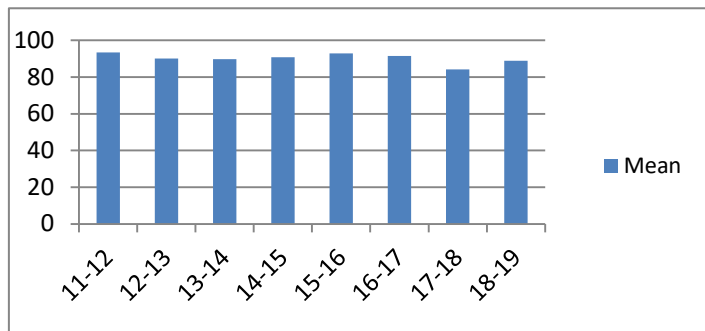
**Average Incarceration Length - Schedule II Drugs:  
Max \$100,000 Fine - Standard Offenders**

Fiscal Year	Mean	Median	Standard Deviation	N
11-12	50.32	48.00	16.12	861
12-13	47.23	36.00	14.09	685
13-14	47.75	36.03	14.53	707
14-15	47.01	36.00	15.23	526
15-16	48.81	48.00	13.97	446
16-17	50.47	48.00	15.80	433
17-18	51.65	48.00	16.14	296
18-19	50.19	48.00	16.08	233



**Average Incarceration Length - Schedule II Drugs:  
Max \$100,000 Fine - Multiple Offenders**

Fiscal Year	Mean	Median	Standard Deviation	N
11-12	93.47	96.00	20.69	90
12-13	90.20	96.00	20.04	131
13-14	89.77	84.00	19.83	129
14-15	90.86	96.00	21.50	65
15-16	92.87	96.00	21.16	99
16-17	91.48	96.00	21.98	69
17-18	84.21	72.00	26.20	57
18-19	88.97	84.00	19.95	58

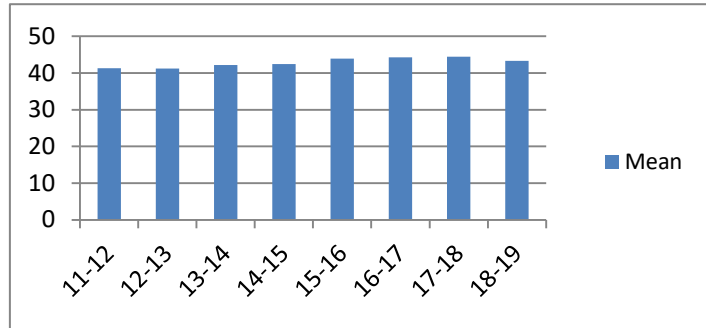


## Average Incarceration Lengths in Months by Felony Class and Offense

Note: Column N indicates the number of felony convictions. Individual offenders can have multiple convictions. Incarceration includes life without parole and death sentences. Probation includes sentences to community corrections.

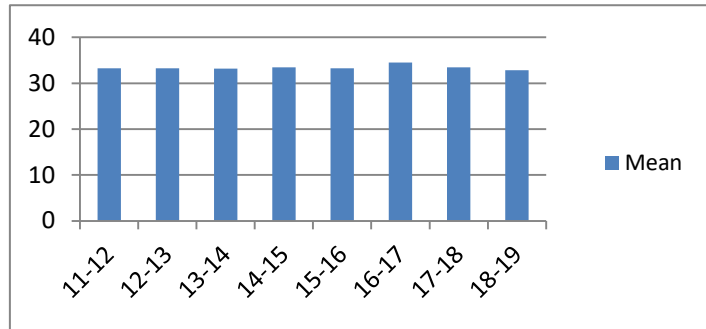
**Average Incarceration Length - Class D -  
All Offenders**

Fiscal Year	Mean	Median	Standard Deviation	N
11-12	41.35	36.00	23.54	8,099
12-13	41.23	36.00	23.18	7,113
13-14	42.21	36.00	23.95	6,526
14-15	42.45	36.00	24.09	5,875
15-16	43.92	36.00	25.49	5,630
16-17	44.25	36.00	25.15	4,994
17-18	44.47	36.00	26.67	3,443
18-19	43.33	36.00	26.02	2,871



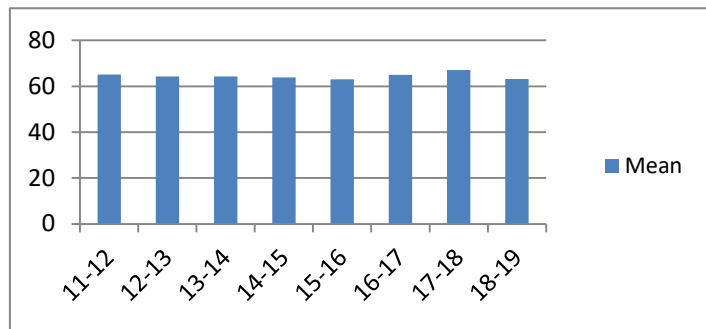
**Average Incarceration Length - Class D -  
Standard Offenders**

Fiscal Year	Mean	Median	Standard Deviation	N
11-12	33.26	30.00	10.56	6,554
12-13	33.24	30.00	10.27	5,798
13-14	33.22	30.00	10.36	5,116
14-15	33.47	36.00	10.64	4,619
15-16	33.26	36.00	10.31	4,194
16-17	34.53	36.00	11.04	3,864
17-18	33.47	36.00	10.59	2,616
18-19	32.87	25.00	10.35	2,177



**Average Incarceration Length - Class D -  
Multiple Offenders**

Fiscal Year	Mean	Median	Standard Deviation	N
11-12	65.10	60.00	18.46	1,179
12-13	64.30	60.00	18.52	951
13-14	64.34	60.00	17.84	1,090
14-15	63.86	60.00	18.62	940
15-16	63.09	60.00	18.23	1,084
16-17	64.95	60.00	18.96	848
17-18	67.09	72.00	19.68	601
18-19	63.12	60.00	18.79	521

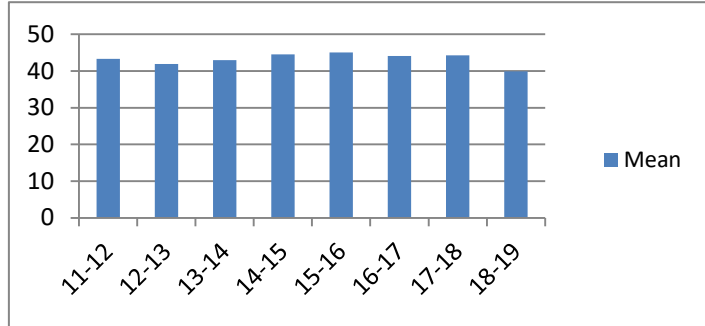


## Average Incarceration Lengths in Months by Felony Class and Offense

Note: Column N indicates the number of felony convictions. Individual offenders can have multiple convictions. Incarceration includes life without parole and death sentences. Probation includes sentences to community corrections.

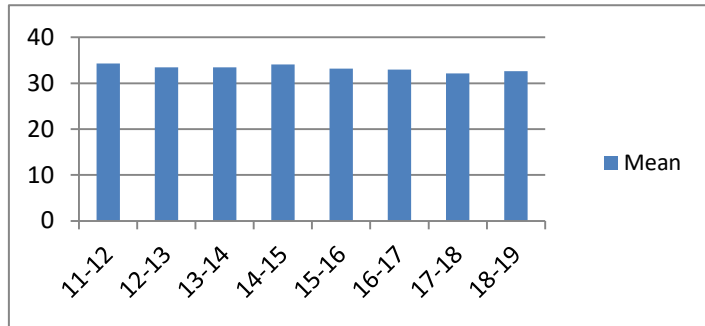
**Average Incarceration Length - Theft: \$1,000 to \$10,000 - All Offenders**

Fiscal Year	Mean	Median	Standard Deviation	N
11-12	43.30	36.00	24.79	2,672
12-13	41.92	36.00	23.55	2,470
13-14	42.94	36.00	25.10	2,175
14-15	44.53	36.00	25.76	2,025
15-16	45.03	36.00	26.66	1,970
16-17	44.08	36.00	25.62	1,465
17-18	44.29	36.00	27.52	564
18-19	39.93	36.00	22.01	213



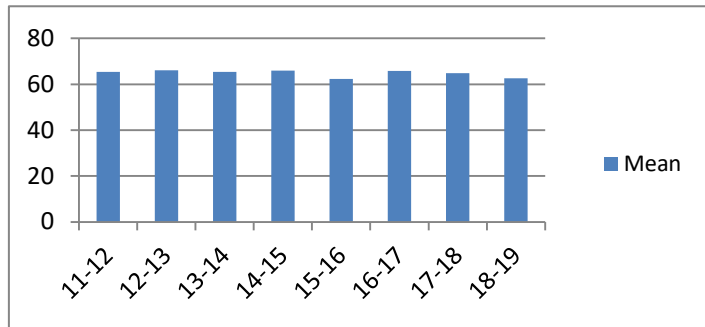
**Average Incarceration Length - Theft: \$1,000 to \$10,000 - Standard Offenders**

Fiscal Year	Mean	Median	Standard Deviation	N
11-12	34.27	36.00	10.76	2,117
12-13	33.47	36.00	10.31	1,979
13-14	33.49	36.00	10.20	1,708
14-15	34.10	36.00	11.08	1,538
15-16	33.19	36.00	10.11	1,400
16-17	32.95	36.00	10.48	1,090
17-18	32.16	24.00	11.21	413
18-19	32.64	24.00	11.50	168



**Average Incarceration Length - Theft: \$1,000 to \$10,000 - Multiple Offenders**

Fiscal Year	Mean	Median	Standard Deviation	N
11-12	65.41	60.00	19.26	416
12-13	66.06	60.00	20.01	367
13-14	65.34	60.00	19.19	356
14-15	65.97	60.00	19.54	364
15-16	62.37	60.00	19.16	445
16-17	65.86	60.00	19.35	291
17-18	64.87	60.00	22.08	106
18-19	62.59	60.00	18.36	37





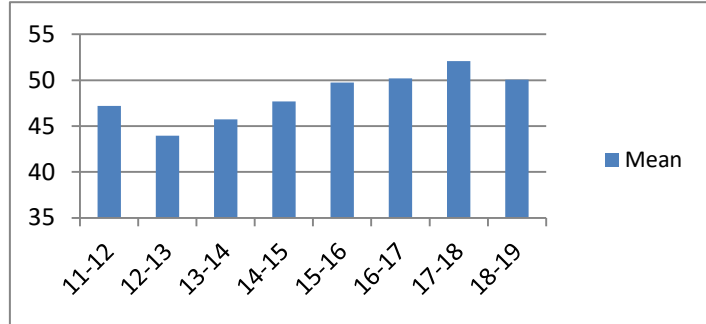
## Average Incarceration Lengths in Months by Felony Class and Offense

Note: Column N indicates the number of felony convictions. Individual offenders can have multiple convictions. Incarceration includes life without parole and death sentences. Probation includes sentences to community corrections.

### Average Incarceration Length -

#### Burglary Other Than Habitation - All Offenders

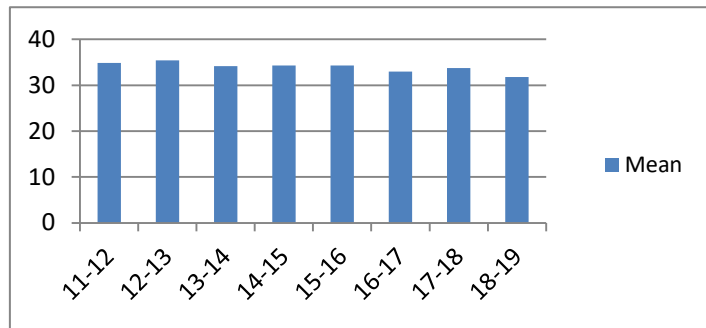
Fiscal Year	Mean	Median	Standard Deviation	N
11-12	47.19	36.00	28.58	1,142
12-13	43.97	36.00	23.57	971
13-14	45.72	36.00	25.60	911
14-15	47.67	48.00	28.81	774
15-16	49.74	48.00	29.39	732
16-17	50.21	36.00	31.76	707
17-18	52.08	48.00	32.32	623
18-19	50.07	48.00	32.41	581



### Average Incarceration Length -

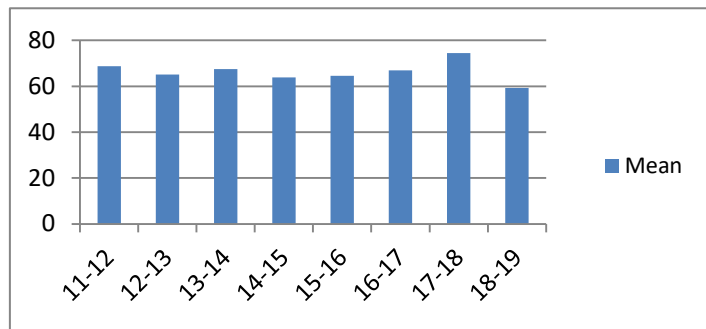
#### Burglary Other Than Habitation - Standard Offenders

Fiscal Year	Mean	Median	Standard Deviation	N
11-12	34.89	36.00	10.75	863
12-13	35.45	36.00	10.64	773
13-14	34.18	36.00	10.62	673
14-15	34.31	36.00	11.07	551
15-16	34.33	36.00	10.72	480
16-17	33.00	30.00	10.61	466
17-18	33.78	36.00	10.60	409
18-19	31.76	24.03	9.71	353



### Average Incarceration Length - Burglary Other Than Habitation - Multiple Offenders

Fiscal Year	Mean	Median	Standard Deviation	N
11-12	68.77	72.00	20.21	186
12-13	65.08	60.00	17.32	143
13-14	67.53	72.00	17.02	184
14-15	63.81	60.00	17.18	144
15-16	64.52	60.00	17.50	186
16-17	66.97	60.00	19.24	167
17-18	74.40	72.00	20.23	145
18-19	59.21	48.00	16.24	154

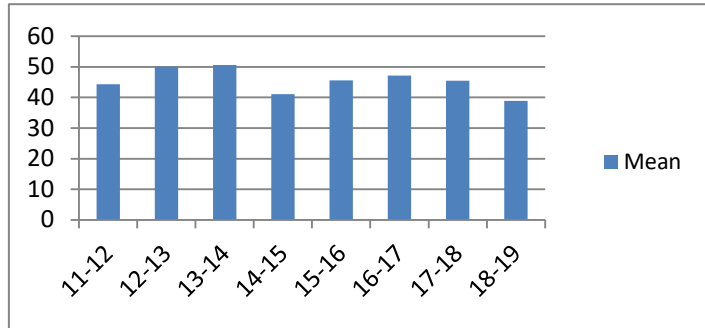


## Average Incarceration Lengths in Months by Felony Class and Offense

Note: Column N indicates the number of felony convictions. Individual offenders can have multiple convictions. Incarceration includes life without parole and death sentences. Probation includes sentences to community corrections.

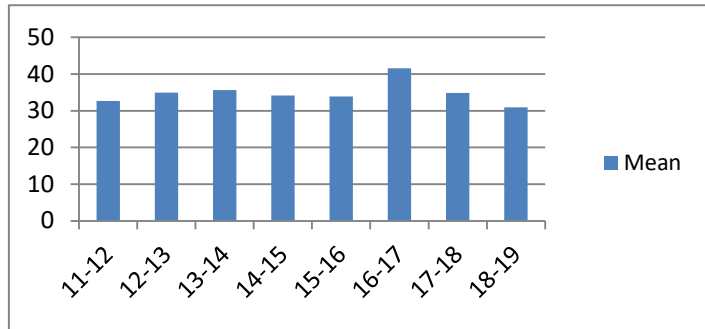
**Average Incarceration Length - Identity Theft -  
All Offenders**

Fiscal Year	Mean	Median	Standard Deviation	N
11-12	44.34	36.00	25.23	542
12-13	50.12	48.00	30.12	473
13-14	50.58	48.00	29.40	362
14-15	41.08	36.00	19.37	414
15-16	45.63	36.00	24.22	406
16-17	47.15	48.00	19.44	656
17-18	45.46	48.00	27.33	258
18-19	38.91	35.16	22.87	239



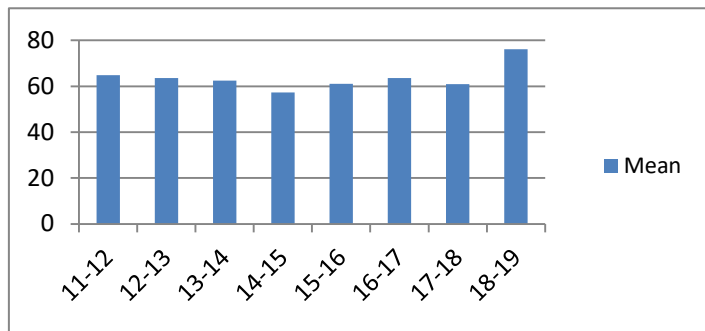
**Average Incarceration Length - Identity Theft -  
Standard Offenders**

Fiscal Year	Mean	Median	Standard Deviation	N
11-12	32.64	36.00	9.59	389
12-13	34.92	36.00	10.53	328
13-14	35.64	36.00	10.31	237
14-15	34.18	36.00	9.59	322
15-16	33.87	36.00	9.73	281
16-17	41.55	48.00	9.71	543
17-18	34.86	36.00	10.74	194
18-19	30.89	24.00	9.03	202



**Average Incarceration Length - Identity Theft -  
Multiple Offenders**

Fiscal Year	Mean	Median	Standard Deviation	N
11-12	64.91	66.00	15.79	127
12-13	63.56	60.00	16.66	91
13-14	62.48	48.00	16.62	92
14-15	57.32	48.00	17.59	76
15-16	61.05	60.00	13.82	91
16-17	63.52	60.00	18.01	92
17-18	60.93	60.00	13.77	45
18-19	76.13	78.00	20.81	32

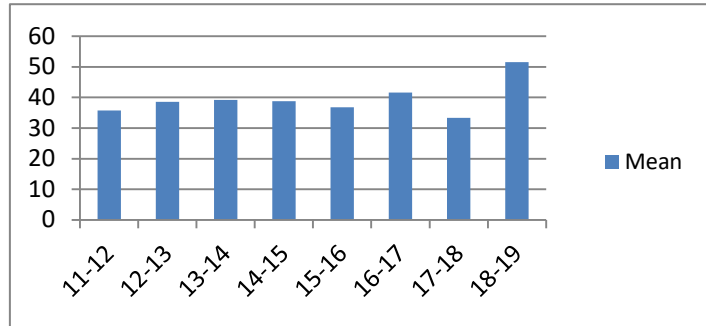


## Average Incarceration Lengths in Months by Felony Class and Offense

Note: Column N indicates the number of felony convictions. Individual offenders can have multiple convictions. Incarceration includes life without parole and death sentences. Probation includes sentences to community corrections.

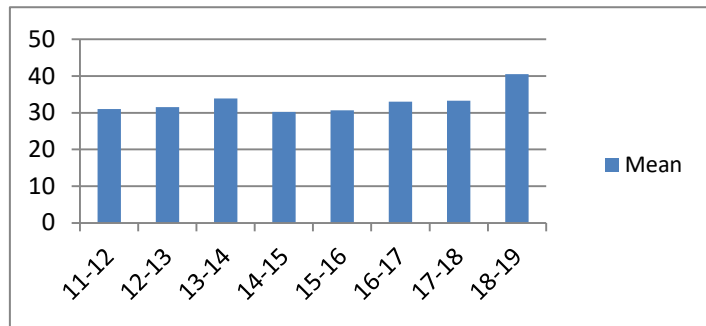
**Average Incarceration Length -  
Obtain Drugs by Fraud - All Offenders**

Fiscal Year	Mean	Median	Standard Deviation	N
11-12	35.73	36.00	16.10	287
12-13	38.63	24.52	24.98	180
13-14	39.23	36.00	18.21	143
14-15	38.78	24.03	21.67	134
15-16	36.84	36.00	18.28	187
16-17	41.67	36.00	24.25	36
17-18	33.33	36.00	9.70	18
18-19	51.60	48.00	25.33	10



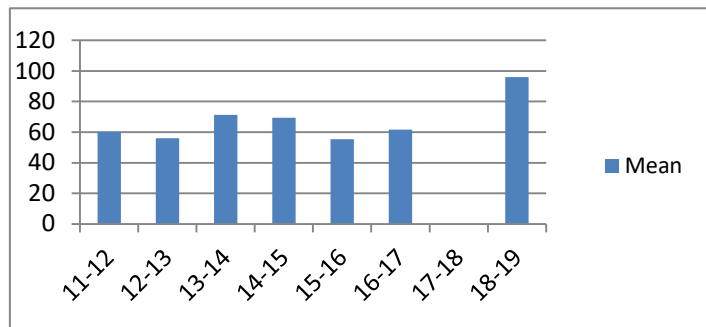
**Average Incarceration Length -  
Obtain Drugs by Fraud - Standard Offenders**

Fiscal Year	Mean	Median	Standard Deviation	N
11-12	30.99	24.00	8.84	243
12-13	31.56	24.00	9.90	158
13-14	33.94	36.00	10.08	125
14-15	30.22	24.00	8.56	110
15-16	30.69	24.03	7.59	158
16-17	33.00	36.00	8.41	28
17-18	33.33	36.00	9.70	18
18-19	40.50	48.00	10.99	8



**Average Incarceration Length -  
Obtain Drugs by Fraud - Multiple Offenders**

Fiscal Year	Mean	Median	Standard Deviation	N
11-12	60.29	48.00	17.48	42
12-13	56.00	48.00	11.82	12
13-14	71.25	72.00	13.48	16
14-15	69.47	72.00	11.01	19
15-16	55.50	48.00	13.77	16
16-17	61.71	48.00	23.42	7
17-18	.	.	.	0
18-19	96.00	96.00	0.00	2

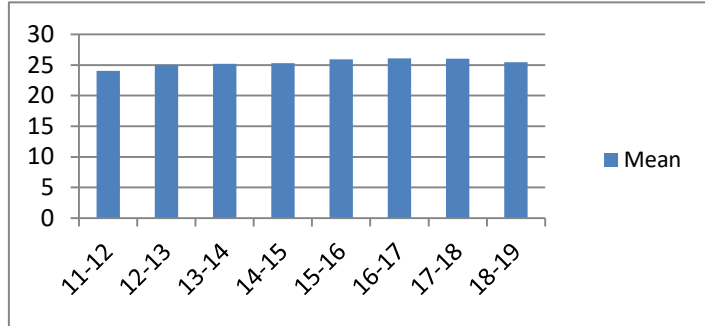


## Average Incarceration Lengths in Months by Felony Class and Offense

Note: Column N indicates the number of felony convictions. Individual offenders can have multiple convictions. Incarceration includes life without parole and death sentences. Probation includes sentences to community corrections.

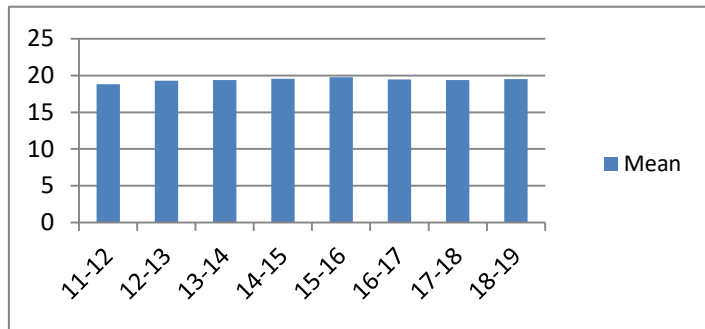
**Average Incarceration Length - Class E - All Offenders**

Fiscal Year	Mean	Median	Standard Deviation	N
11-12	24.06	24.00	13.19	8,534
12-13	25.06	24.00	14.37	8,037
13-14	25.19	24.00	15.03	7,374
14-15	25.31	24.00	13.86	6,262
15-16	25.96	24.00	13.95	6,280
16-17	26.07	24.00	14.51	5,790
17-18	26.03	24.00	14.69	5,226
18-19	25.49	24.00	14.21	4,012



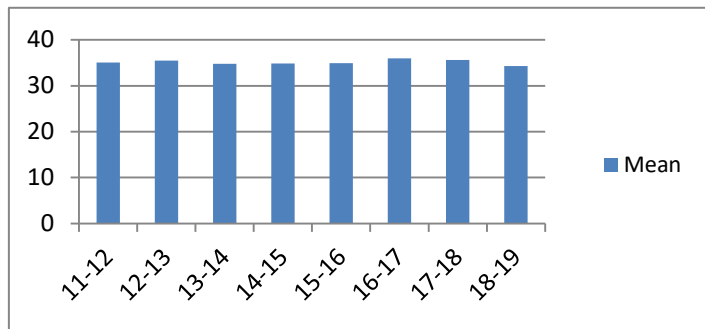
**Average Incarceration Length - Class E - Standard Offenders**

Fiscal Year	Mean	Median	Standard Deviation	N
11-12	18.83	24.00	6.30	6,471
12-13	19.32	24.00	6.64	6,080
13-14	19.37	24.00	6.85	5,517
14-15	19.58	24.00	6.79	4,590
15-16	19.78	24.00	6.37	4,402
16-17	19.48	24.00	6.25	4,146
17-18	19.40	24.00	6.25	3,767
18-19	19.54	24.00	6.69	2,912



**Average Incarceration Length - Class E - Multiple Offenders**

Fiscal Year	Mean	Median	Standard Deviation	N
11-12	35.07	36.00	10.50	1,574
12-13	35.48	36.00	10.72	1,349
13-14	34.82	36.00	10.60	1,363
14-15	34.85	36.00	10.52	1,258
15-16	34.90	36.00	11.15	1,452
16-17	35.98	36.00	10.94	1,183
17-18	35.66	36.00	10.25	1,035
18-19	34.29	36.00	10.52	808

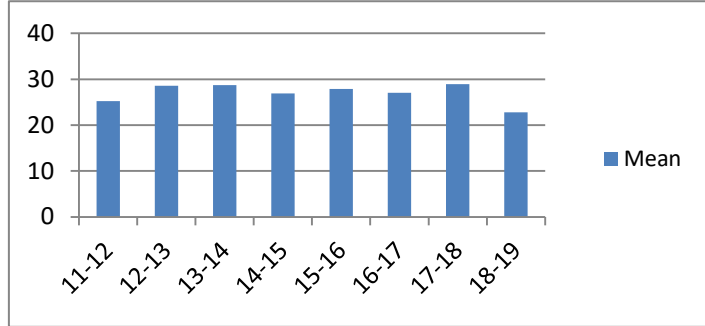


## Average Incarceration Lengths in Months by Felony Class and Offense

Note: Column N indicates the number of felony convictions. Individual offenders can have multiple convictions. Incarceration includes life without parole and death sentences. Probation includes sentences to community corrections.

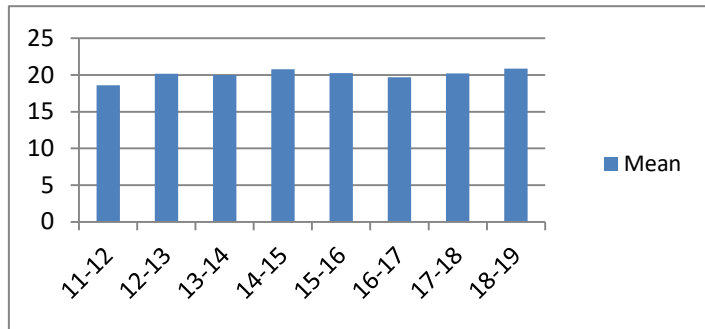
**Average Incarceration Length -  
Forgery: Up to \$1,000 - All Offenders**

Fiscal Year	Mean	Median	Standard Deviation	N
11-12	25.20	24.00	14.51	1,300
12-13	28.56	24.00	17.65	1,408
13-14	28.70	24.00	22.30	920
14-15	26.90	24.00	13.60	642
15-16	27.91	24.00	14.69	613
16-17	27.02	24.00	14.90	648
17-18	28.90	24.00	17.01	310
18-19	22.80	24.00	7.84	155



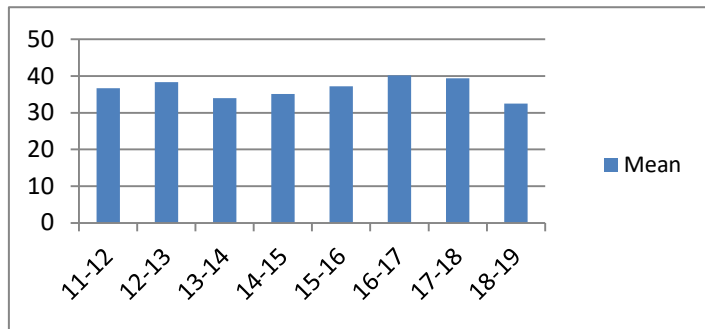
**Average Incarceration Length -  
Forgery: Up to \$1,000 - Standard Offenders**

Fiscal Year	Mean	Median	Standard Deviation	N
11-12	18.62	24.00	6.23	960
12-13	20.18	24.00	6.55	1,040
13-14	19.98	24.00	7.36	678
14-15	20.80	24.00	5.49	458
15-16	20.27	24.00	5.98	419
16-17	19.71	24.00	5.98	464
17-18	20.20	24.00	6.44	219
18-19	20.88	24.00	5.26	129



**Average Incarceration Length -  
Forgery: Up to \$1,000 - Multiple Offenders**

Fiscal Year	Mean	Median	Standard Deviation	N
11-12	36.69	36.00	10.19	235
12-13	38.34	36.00	9.73	167
13-14	33.99	36.00	9.88	135
14-15	35.12	36.00	10.60	132
15-16	37.21	36.00	9.30	134
16-17	40.21	36.00	11.77	130
17-18	39.40	36.00	8.29	60
18-19	32.50	24.02	10.30	24

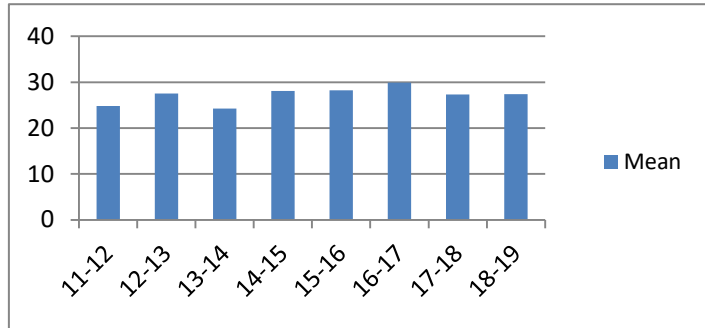


## Average Incarceration Lengths in Months by Felony Class and Offense

Note: Column N indicates the number of felony convictions. Individual offenders can have multiple convictions. Incarceration includes life without parole and death sentences. Probation includes sentences to community corrections.

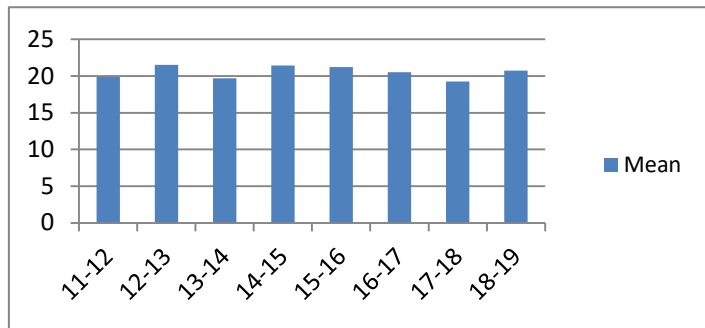
**Average Incarceration Length - Burglary: Auto - All Offenders**

Fiscal Year	Mean	Median	Standard Deviation	N
11-12	24.81	24.00	12.22	1,424
12-13	27.55	24.00	14.79	991
13-14	24.25	24.00	13.05	1,098
14-15	28.10	24.00	15.81	935
15-16	28.24	24.00	14.10	941
16-17	29.93	24.00	17.61	715
17-18	27.36	24.00	16.97	790
18-19	27.41	24.00	15.76	537



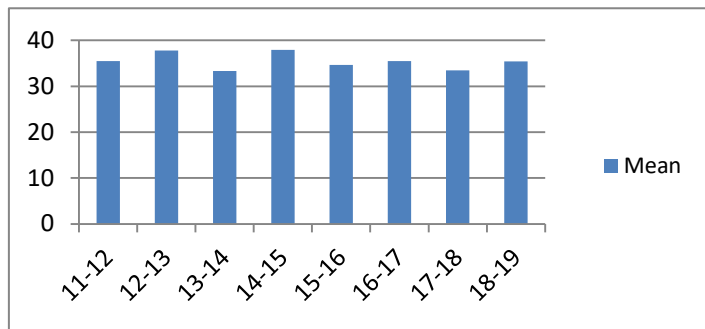
**Average Incarceration Length - Burglary: Auto - Standard Offenders**

Fiscal Year	Mean	Median	Standard Deviation	N
11-12	19.85	24.00	5.75	1,075
12-13	21.54	24.00	7.19	746
13-14	19.70	24.00	6.12	872
14-15	21.43	24.00	8.72	685
15-16	21.23	24.00	5.50	582
16-17	20.52	24.00	6.03	468
17-18	19.24	24.00	5.90	551
18-19	20.75	24.00	7.69	389



**Average Incarceration Length - Burglary: Auto - Multiple Offenders**

Fiscal Year	Mean	Median	Standard Deviation	N
11-12	35.48	36.00	10.69	275
12-13	37.82	42.00	11.86	171
13-14	33.34	36.00	9.72	161
14-15	37.93	36.00	10.29	164
15-16	34.64	36.00	12.57	295
16-17	35.47	36.00	10.75	144
17-18	33.44	36.00	10.42	131
18-19	35.41	36.00	10.55	97

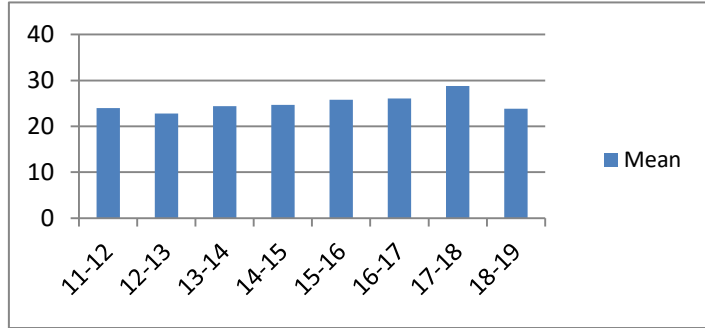


## Average Incarceration Lengths in Months by Felony Class and Offense

Note: Column N indicates the number of felony convictions. Individual offenders can have multiple convictions. Incarceration includes life without parole and death sentences. Probation includes sentences to community corrections.

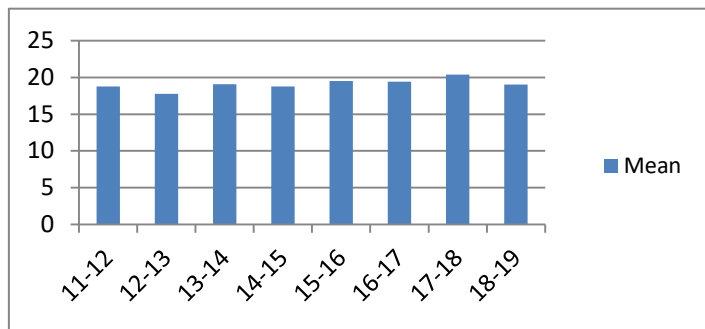
**Average Incarceration Length - Theft: \$500 - \$1,000 - All Offenders**

Fiscal Year	Mean	Median	Standard Deviation	N
11-12	23.95	24.00	13.87	1,165
12-13	22.80	24.00	13.52	1,078
13-14	24.40	24.00	13.54	1,048
14-15	24.71	24.00	14.33	920
15-16	25.80	24.00	14.32	897
16-17	26.09	24.00	14.49	785
17-18	28.81	24.00	15.58	326
18-19	23.84	24.00	13.32	156



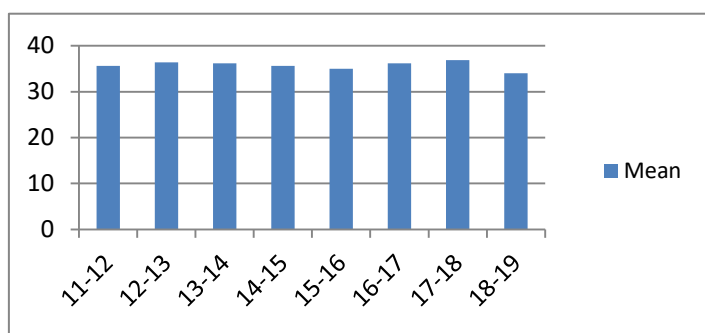
**Average Incarceration Length - Theft: \$500 - \$1,000 - Standard Offenders**

Fiscal Year	Mean	Median	Standard Deviation	N
11-12	18.77	24.00	6.25	921
12-13	17.78	12.00	6.38	863
13-14	19.09	24.00	6.14	814
14-15	18.76	24.00	6.09	693
15-16	19.51	24.00	6.10	640
16-17	19.42	24.00	6.15	567
17-18	20.38	24.00	7.49	205
18-19	19.02	24.00	6.44	122



**Average Incarceration Length - Theft: \$500 - \$1,000 - Multiple Offenders**

Fiscal Year	Mean	Median	Standard Deviation	N
11-12	35.66	36.00	10.76	169
12-13	36.41	36.00	11.57	153
13-14	36.20	36.00	10.22	174
14-15	35.60	36.00	10.61	162
15-16	35.03	36.00	12.29	193
16-17	36.16	36.00	10.38	155
17-18	36.86	36.00	10.94	91
18-19	34.00	36.00	9.56	27

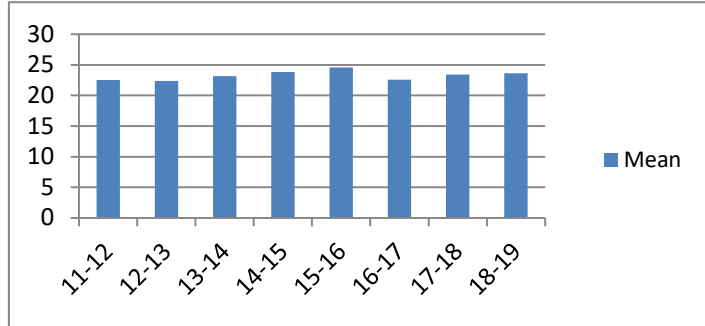


## Average Incarceration Lengths in Months by Felony Class and Offense

Note: Column N indicates the number of felony convictions. Individual offenders can have multiple convictions. Incarceration includes life without parole and death sentences. Probation includes sentences to community corrections.

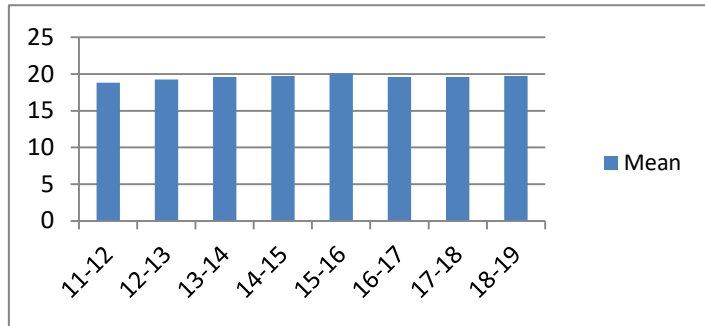
### Average Incarceration Length - Schedule VI Drugs: Not < 1/2 Ounce - All Offenders

Fiscal Year	Mean	Median	Standard Deviation	N
11-12	22.56	24.00	11.42	719
12-13	22.38	24.00	10.70	683
13-14	23.19	24.00	11.66	659
14-15	23.86	24.00	11.23	538
15-16	24.58	24.00	12.15	431
16-17	22.60	24.00	10.56	343
17-18	23.41	24.00	11.45	297
18-19	23.62	24.00	12.60	249



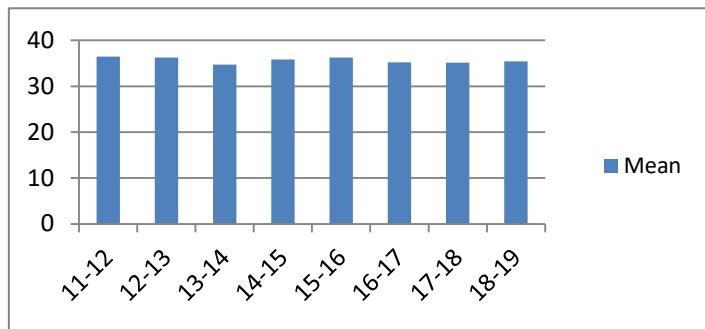
### Average Incarceration Length - Schedule VI Drugs: Not < 1/2 Ounce - Standard Offenders

Fiscal Year	Mean	Median	Standard Deviation	N
11-12	18.83	24.00	6.18	589
12-13	19.28	24.00	5.97	573
13-14	19.61	24.00	6.70	538
14-15	19.73	24.00	6.18	417
15-16	20.08	24.00	6.20	325
16-17	19.60	24.00	6.00	286
17-18	19.61	24.00	5.93	242
18-19	19.72	24.00	7.13	206



### Average Incarceration Length - Schedule VI Drugs: Not < 1/2 Ounce - Multiple Offenders

Fiscal Year	Mean	Median	Standard Deviation	N
11-12	36.46	36.00	10.47	110
12-13	36.29	36.00	9.79	87
13-14	34.75	36.00	10.47	101
14-15	35.83	36.00	10.24	107
15-16	36.28	36.00	10.47	87
16-17	35.23	36.00	10.66	47
17-18	35.14	36.00	9.88	42
18-19	35.45	36.00	10.21	33



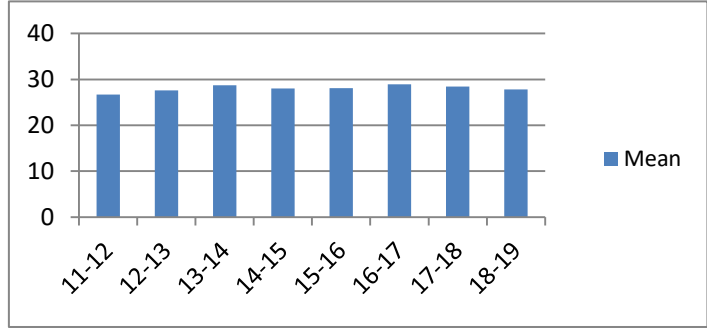


## Average Incarceration Lengths in Months by Felony Class and Offense

Note: Column N indicates the number of felony convictions. Individual offenders can have multiple convictions. Incarceration includes life without parole and death sentences. Probation includes sentences to community corrections.

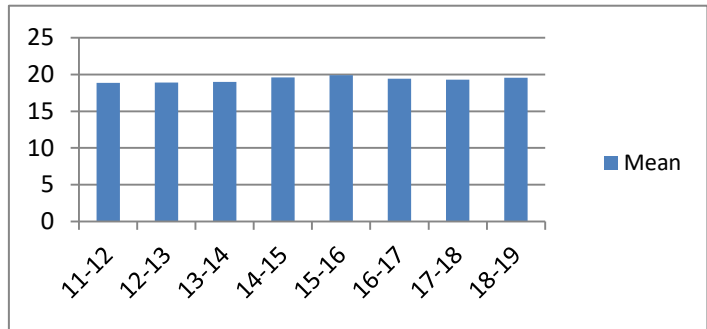
**Average Incarceration Length -  
Habitual Traffic Offender - All Offenders**

Fiscal Year	Mean	Median	Standard Deviation	N
11-12	26.73	24.00	15.03	428
12-13	27.63	24.00	15.24	425
13-14	28.70	24.00	15.98	398
14-15	28.05	24.00	14.44	320
15-16	28.12	24.00	14.58	305
16-17	28.92	24.00	15.49	283
17-18	28.46	24.00	14.57	251
18-19	27.83	24.00	15.39	196



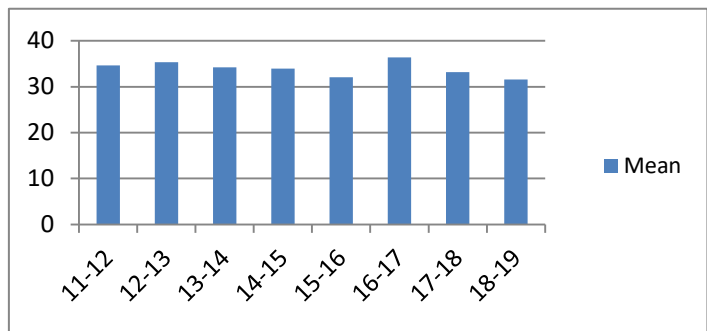
**Average Incarceration Length -  
Habitual Traffic Offender - Standard Offenders**

Fiscal Year	Mean	Median	Standard Deviation	N
11-12	18.86	24.00	5.75	274
12-13	18.93	24.00	5.98	265
13-14	19.00	18.00	6.27	228
14-15	19.62	24.00	6.32	183
15-16	19.91	24.00	5.44	172
16-17	19.45	24.00	5.64	170
17-18	19.30	24.00	5.26	134
18-19	19.56	24.00	6.01	119



**Average Incarceration Length -  
Habitual Traffic Offender - Multiple Offenders**

Fiscal Year	Mean	Median	Standard Deviation	N
11-12	34.64	36.00	9.79	118
12-13	35.35	36.00	9.90	118
13-14	34.26	36.00	9.91	117
14-15	33.97	36.00	10.24	105
15-16	32.08	30.00	8.83	103
16-17	36.37	36.00	10.42	76
17-18	33.17	36.00	9.00	90
18-19	31.55	30.00	8.51	47

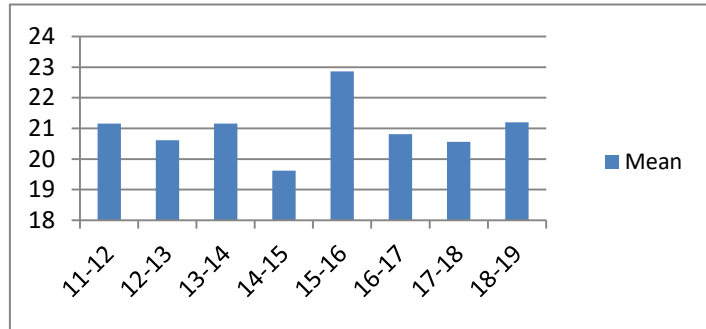


## Average Incarceration Lengths in Months by Felony Class and Offense

Note: Column N indicates the number of felony convictions. Individual offenders can have multiple convictions. Incarceration includes life without parole and death sentences. Probation includes sentences to community corrections.

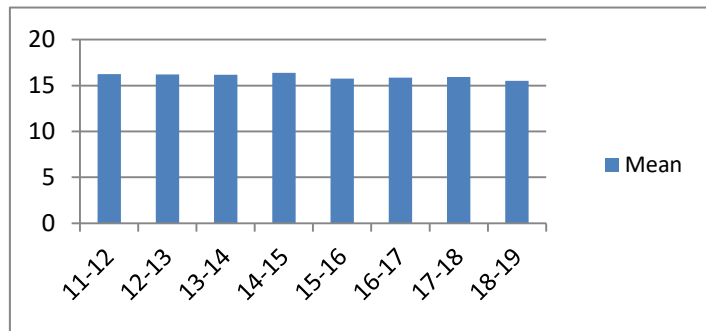
### Average Incarceration Length - Failure to Appear (Felony) - All Offenders

Fiscal Year	Mean	Median	Standard Deviation	N
11-12	21.16	18.00	12.48	371
12-13	20.61	18.00	11.90	435
13-14	21.16	18.00	12.78	410
14-15	19.62	18.00	10.17	373
15-16	22.86	24.00	15.06	340
16-17	20.81	16.00	12.42	399
17-18	20.56	12.00	12.57	402
18-19	21.20	12.00	14.29	306



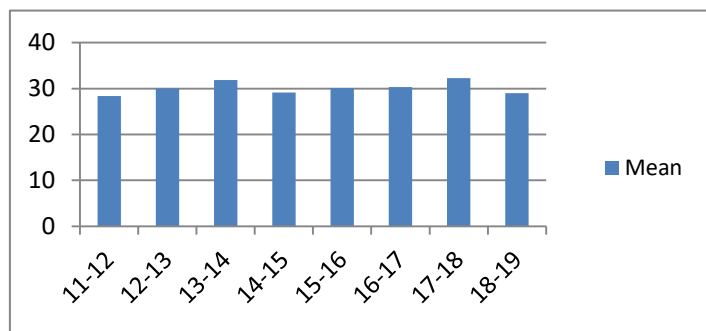
### Average Incarceration Length - Failure to Appear (Felony) - Standard Offenders

Fiscal Year	Mean	Median	Standard Deviation	N
11-12	16.26	12.00	5.53	277
12-13	16.21	12.00	5.51	336
13-14	16.18	12.00	5.58	316
14-15	16.37	12.00	5.49	300
15-16	15.76	12.00	5.44	229
16-17	15.86	12.00	5.56	305
17-18	15.93	12.00	5.38	318
18-19	15.52	12.00	5.25	234



### Average Incarceration Length - Failure to Appear (Felony) - Multiple Offenders

Fiscal Year	Mean	Median	Standard Deviation	N
11-12	28.34	24.00	7.41	70
12-13	30.07	24.00	9.13	74
13-14	31.88	24.00	10.22	73
14-15	29.13	24.00	8.41	64
15-16	30.14	24.00	9.42	83
16-17	30.33	24.00	9.07	70
17-18	32.27	24.00	10.25	66
18-19	28.98	24.00	8.51	47



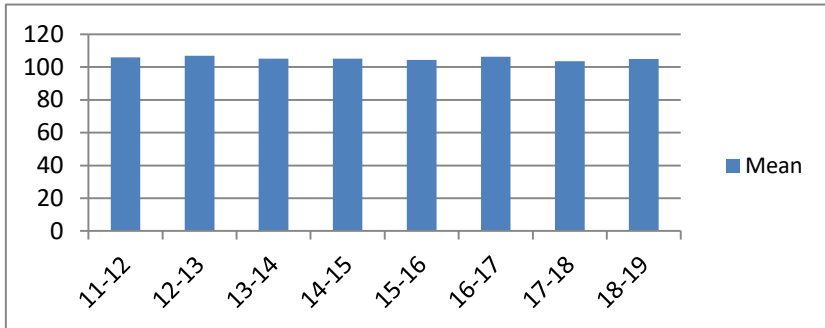
# Average Probation Lengths in Months by Felony Class

Note: Column N indicates the number of felony convictions. Individual offenders can have multiple convictions. Incarceration includes lifewithout parole and death sentences. Probation includes sentences to community corrections.

## Average Probation Length - Felony Class B - All Offenders

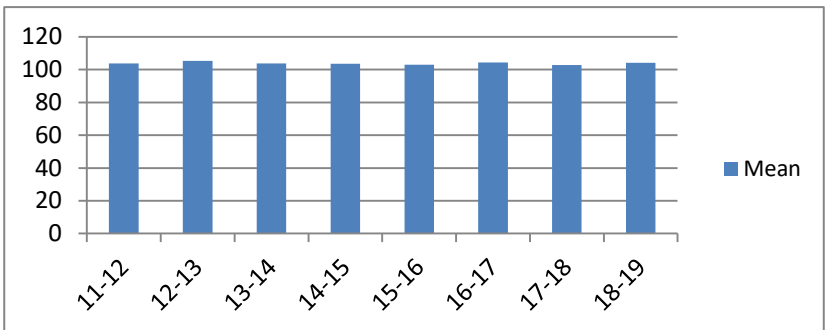
Fiscal Year	Mean	Median	Standard Deviation	N
11-12	105.81	96.00	23.15	554
12-13	106.88	96.00	25.47	618
13-14	105.15	96.00	18.83	485
14-15	105.14	96.00	18.24	567
15-16	104.22	96.00	15.57	527
16-17	106.27	96.00	22.17	504
17-18	103.58	96.00	17.21	721
18-19	104.92	96.00	17.19	919

included due to low occurrence frequencies.



## Average Probation Length - Felony Class B - Standard Offenders

Fiscal Year	Mean	Median	Standard Deviation	N
11-12	103.73	96.00	19.30	516
12-13	105.26	96.00	23.66	582
13-14	103.66	96.00	15.37	466
14-15	103.60	96.00	16.39	535
15-16	102.99	96.00	12.81	506
16-17	104.30	96.00	17.80	486
17-18	102.66	96.00	14.67	691
18-19	104.09	96.00	15.76	902

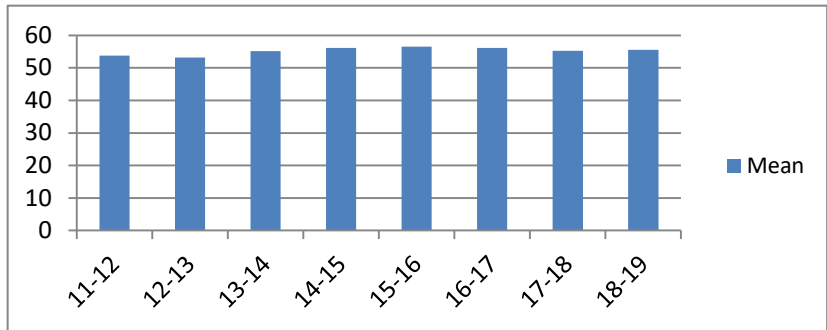


# Average Probation Lengths in Months by Felony Class

Note: Column N indicates the number of felony convictions. Individual offenders can have multiple convictions. Incarceration includes lifewithout parole and death sentences. Probation includes sentences to community corrections.

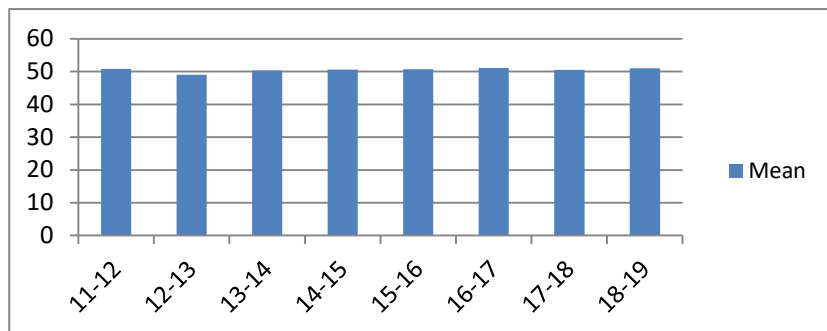
**Average Probation Length - Class C - All Offenders**

Fiscal Year	Mean	Median	Standard Deviation	N
11-12	53.74	48.00	20.93	2,425
12-13	53.16	48.00	21.75	2,426
13-14	55.11	48.00	24.11	2,415
14-15	56.08	48.00	23.11	2,179
15-16	56.51	48.00	23.72	2,481
16-17	56.15	48.00	22.49	2,766
17-18	55.28	48.00	21.73	2,986
18-19	55.54	48.00	22.01	3,333



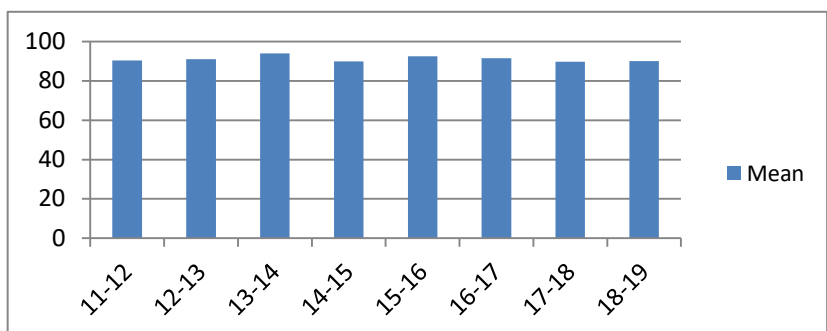
**Average Probation Length - Class C - Standard Offenders**

Fiscal Year	Mean	Median	Standard Deviation	N
11-12	50.81	48.00	16.85	2,250
12-13	49.01	48.00	16.73	2,190
13-14	50.33	48.00	18.48	2,173
14-15	50.59	48.00	17.53	1,890
15-16	50.71	48.00	17.08	2,145
16-17	51.06	48.00	16.71	2,441
17-18	50.48	48.00	15.82	2,655
18-19	50.93	48.00	17.04	2,965



**Average Probation Length - Class C - Multiple Offenders**

Fiscal Year	Mean	Median	Standard Deviation	N
11-12	90.26	84.00	24.96	160
12-13	90.98	96.00	22.32	216
13-14	93.86	96.00	23.38	209
14-15	89.80	84.00	21.26	245
15-16	92.45	96.00	18.84	265
16-17	91.49	96.00	21.73	283
17-18	89.72	90.00	20.26	292
18-19	90.05	96.00	20.23	329

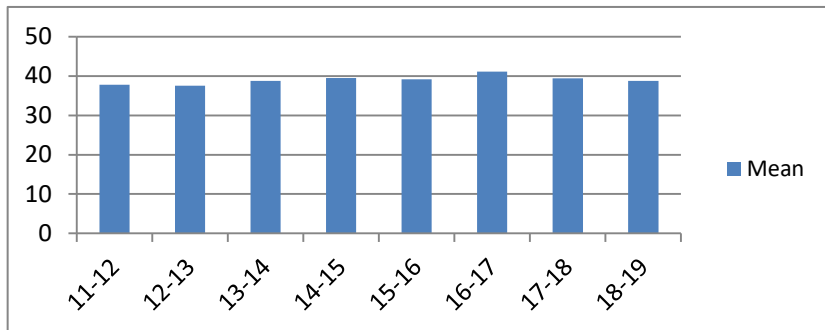


# Average Probation Lengths in Months by Felony Class

Note: Column N indicates the number of felony convictions. Individual offenders can have multiple convictions. Incarceration includes lifewithout parole and death sentences. Probation includes sentences to community corrections.

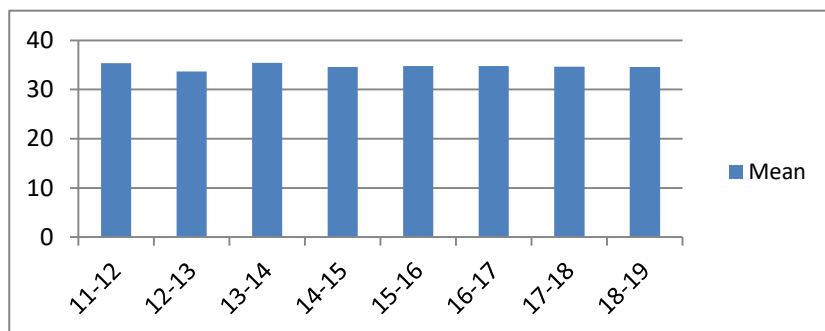
## Average Probation Length - Class D - All Offenders

Fiscal Year	Mean	Median	Standard Deviation	N
11-12	37.79	36.00	21.47	3,501
12-13	37.50	36.00	19.01	3,610
13-14	38.78	36.00	20.74	3,436
14-15	39.49	36.00	19.10	3,275
15-16	39.14	36.00	18.64	3,013
16-17	41.12	36.00	21.62	3,166
17-18	39.38	36.00	18.33	2,916
18-19	38.78	36.00	19.98	3,031



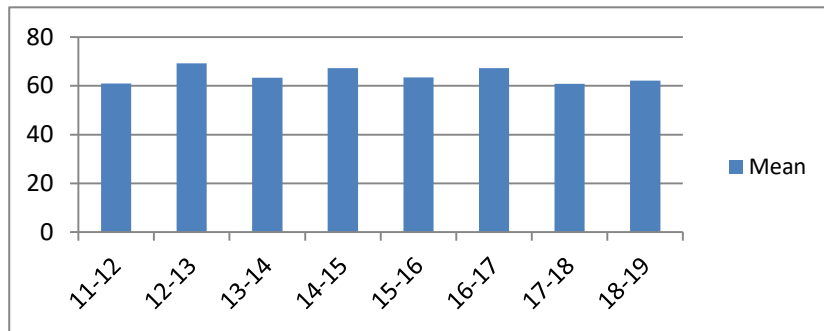
## Average Probation Length - Class D - Standard Offenders

Fiscal Year	Mean	Median	Standard Deviation	N
11-12	35.38	36.00	18.91	3,249
12-13	33.68	36.00	12.85	3,276
13-14	35.40	36.00	16.05	3,132
14-15	34.57	36.00	12.22	2,844
15-16	34.75	36.00	12.90	2,636
16-17	34.76	36.00	12.92	2,662
17-18	34.64	36.00	11.03	2,514
18-19	34.56	36.00	14.60	2,661



## Average Probation Length - Class D - Multiple Offenders

Fiscal Year	Mean	Median	Standard Deviation	N
11-12	60.94	48.00	21.75	199
12-13	69.23	72.00	20.97	290
13-14	63.28	60.00	17.27	235
14-15	67.24	60.00	20.64	368
15-16	63.35	60.00	17.95	307
16-17	67.18	72.00	19.40	401
17-18	60.74	60.00	17.61	324
18-19	62.05	51.00	18.71	310

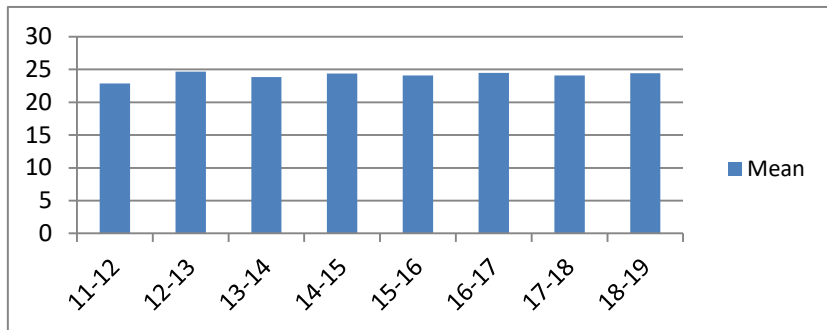


# Average Probation Lengths in Months by Felony Class

Note: Column N indicates the number of felony convictions. Individual offenders can have multiple convictions. Incarceration includes lifewithout parole and death sentences. Probation includes sentences to community corrections.

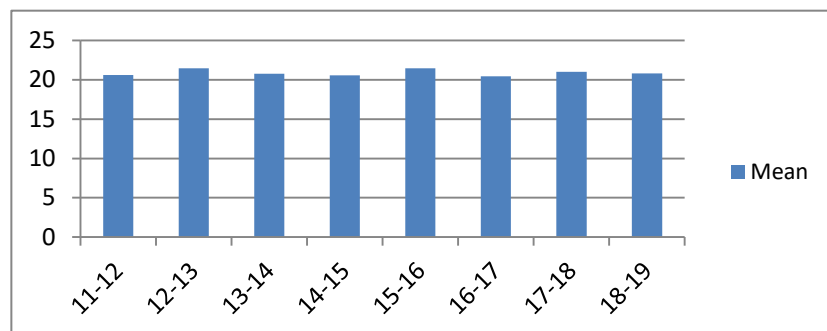
**Average Probation Length - Class E - All Offenders**

Fiscal Year	Mean	Median	Standard Deviation	N
11-12	22.86	24.00	12.07	3,673
12-13	24.66	24.00	14.73	3,885
13-14	23.82	24.00	12.62	3,853
14-15	24.35	24.00	13.82	3,601
15-16	24.06	24.00	12.03	3,663
16-17	24.48	24.00	13.27	3,565
17-18	24.05	24.00	12.52	3,998
18-19	24.43	24.00	13.79	4,274



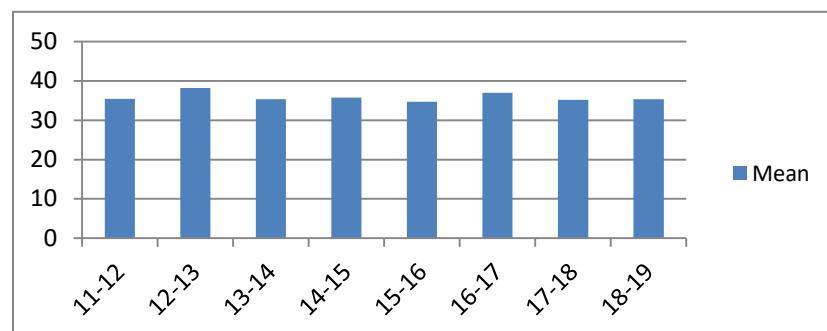
**Average Probation Length - Class E - Standard Offenders**

Fiscal Year	Mean	Median	Standard Deviation	N
11-12	20.61	24.00	9.10	3,257
12-13	21.44	24.00	11.95	3,313
13-14	20.75	24.00	8.76	3,279
14-15	20.55	24.00	10.32	2,934
15-16	21.43	24.00	8.52	3,142
16-17	20.44	24.00	7.83	2,938
17-18	21.00	24.00	8.65	3,391
18-19	20.81	24.00	9.30	3,561



**Average Probation Length - Class E - Multiple Offenders**

Fiscal Year	Mean	Median	Standard Deviation	N
11-12	35.39	36.00	10.75	337
12-13	38.18	36.00	10.59	457
13-14	35.33	36.00	11.01	442
14-15	35.72	36.00	10.60	520
15-16	34.70	36.00	10.58	430
16-17	36.97	36.00	10.94	475
17-18	35.13	36.00	11.33	468
18-19	35.34	36.00	11.03	542

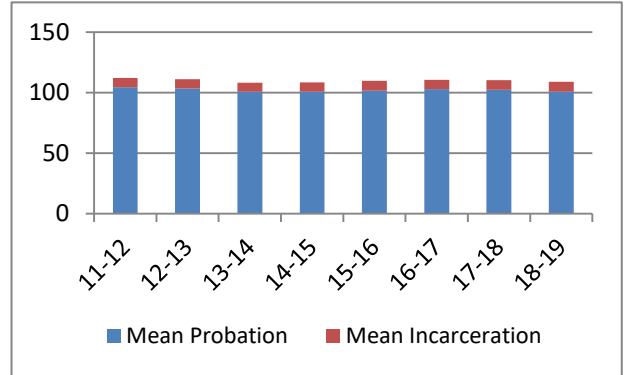


## Average Split Sentence Lengths in Months by Felony Class

Note: Column N indicates the number of felony convictions. Individual offenders can have multiple convictions. Incarceration includes life without parole and death sentences. Probation includes sentences to community corrections.

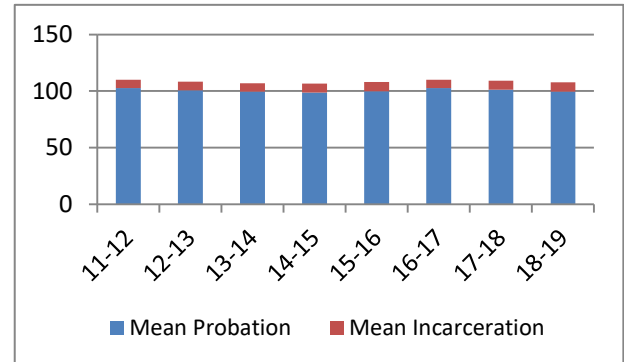
**Average Sentence Length - Felony Class B - All Offenders**

Fiscal Year	Months of Incarceration				Months of Probation			
	Mean	Median	Standard Deviation	N	Mean	Median	Standard Deviation	N
11-12	7.8	8.9	4.3	429	104.3	96.0	20.4	429
12-13	7.7	8.0	4.9	454	103.4	96.0	23.4	454
13-14	7.3	6.0	4.1	363	100.8	96.0	17.3	363
14-15	7.8	9.0	4.1	427	100.6	96.0	19.5	427
15-16	8.1	9.0	4.1	427	101.6	96.0	18.4	427
16-17	7.6	6.0	4.1	726	102.8	96.0	14.6	726
17-18	7.9	6.5	4.0	820	102.3	96.0	18.3	820
18-19	8.3	9.1	4.2	966	100.7	96.0	18.2	966



**Average Sentence Length - Felony Class B - Standard Offenders**

Fiscal Year	Months of Incarceration				Months of Probation			
	Mean	Median	Standard Deviation	N	Mean	Median	Standard Deviation	N
11-12	7.6	8.4	4.3	404	102.5	96.0	18.0	404
12-13	7.6	7.0	4.9	437	100.6	96.0	16.1	437
13-14	7.3	6.0	4.1	353	99.5	96.0	14.7	353
14-15	7.8	9.0	4.1	407	98.7	96.0	16.2	407
15-16	8.1	9.0	4.1	409	99.8	96.0	15.5	409
16-17	7.6	6.0	4.1	718	102.5	96.0	14.1	718
17-18	7.8	6.1	4.0	805	101.2	96.0	14.6	805
18-19	8.3	9.0	4.2	936	99.4	96.0	16.2	936



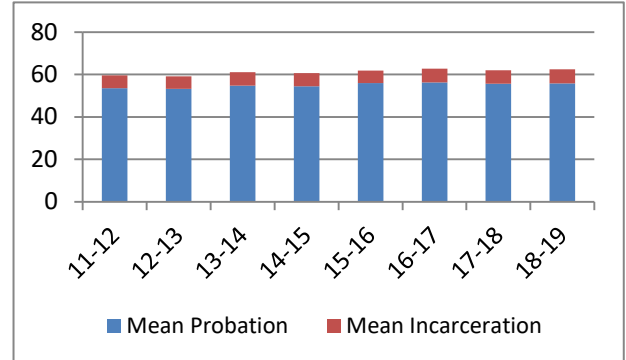
The table for multiple offenders was not included due to low occurrence frequencies.

## Average Split Sentence Lengths in Months by Felony Class

Note: Column N indicates the number of felony convictions. Individual offenders can have multiple convictions. Incarceration includes life without parole and death sentences. Probation includes sentences to community corrections.

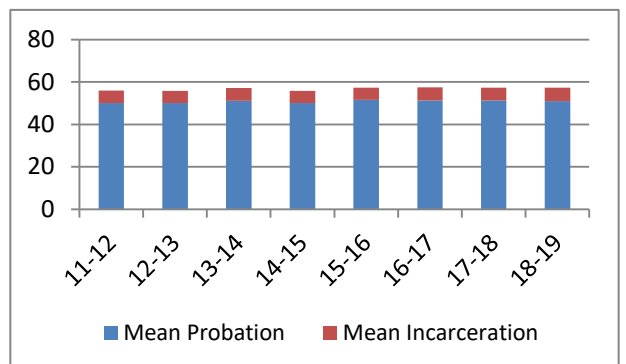
**Average Sentence Length - Class C - All Offenders**

Fiscal Year	Months of Incarceration				Months of Probation			
	Mean	Median	Standard Deviation	N	Mean	Median	Standard Deviation	N
11-12	6.0	5.9	4.2	1,478	53.5	48.0	21.5	1,478
12-13	5.8	4.9	4.1	1,388	53.3	48.0	20.6	1,388
13-14	6.3	5.9	4.2	1,373	54.8	48.0	21.6	1,373
14-15	6.1	5.1	4.1	1,282	54.5	48.0	22.0	1,282
15-16	6.0	5.9	4.1	1,517	55.9	48.0	21.7	1,517
16-17	6.4	6.0	4.1	1,770	56.3	48.0	23.1	1,770
17-18	6.3	5.9	4.1	2,050	55.7	48.0	21.4	2,050
18-19	6.7	6.0	4.3	2,091	55.8	48.0	22.4	2,091



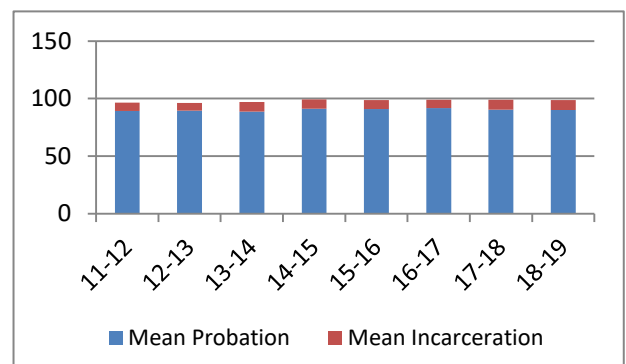
**Average Sentence Length - Class C - Standard Offenders**

Fiscal Year	Months of Incarceration				Months of Probation			
	Mean	Median	Standard Deviation	N	Mean	Median	Standard Deviation	N
11-12	5.9	5.0	4.1	1,362	50.1	48.0	17.4	1,362
12-13	5.7	4.2	4.0	1,274	50.1	48.0	17.4	1,274
13-14	6.0	5.9	4.1	1,246	51.1	48.0	17.7	1,246
14-15	5.8	4.9	4.1	1,135	50.0	48.0	16.7	1,135
15-16	5.7	5.0	4.0	1,362	51.6	48.0	17.3	1,362
16-17	6.2	5.9	4.1	1,558	51.2	48.0	16.5	1,558
17-18	6.0	5.9	4.0	1,827	51.3	48.0	16.7	1,827
18-19	6.4	5.9	4.3	1,854	50.9	48.0	16.9	1,854



**Average Sentence Length - Class C - Multiple Offenders**

Fiscal Year	Months of Incarceration				Months of Probation			
	Mean	Median	Standard Deviation	N	Mean	Median	Standard Deviation	N
11-12	7.4	9.0	4.3	103	89.1	95.1	18.5	103
12-13	6.6	6.0	4.5	108	89.5	90.0	19.9	108
13-14	8.1	11.3	4.2	113	88.8	85.0	20.8	113
14-15	8.1	10.0	4.2	128	91.1	96.0	25.4	128
15-16	7.7	9.0	4.3	137	91.0	96.0	20.5	137
16-17	7.3	6.0	4.2	185	91.6	93.0	26.6	185
17-18	8.5	11.2	4.3	204	90.4	96.0	19.1	204
18-19	8.5	10.0	4.6	206	90.2	92.8	20.8	206



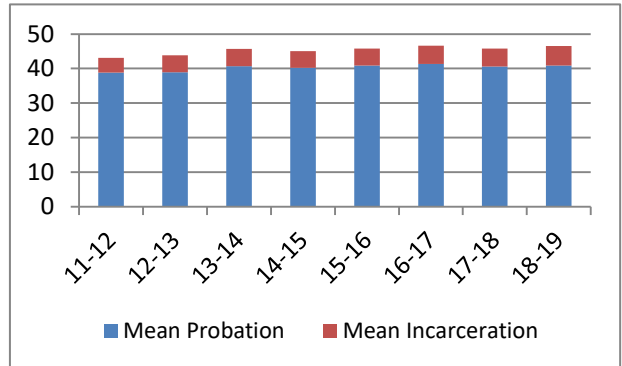


# Average Split Sentence Lengths in Months by Felony Class

Note: Column N indicates the number of felony convictions. Individual offenders can have multiple convictions. Incarceration includes life without parole and death sentences. Probation includes sentences to community corrections.

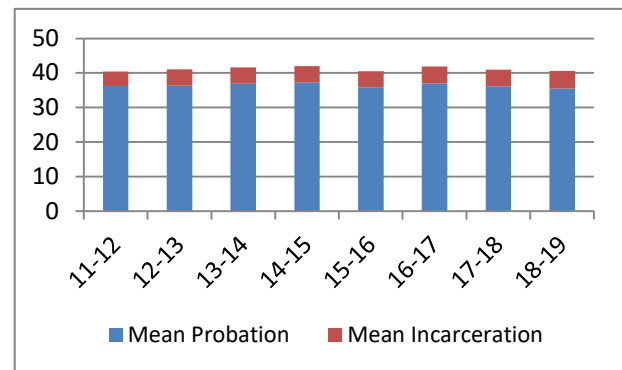
**Average Sentence Length - Class D - All Offenders**

Fiscal Year	Months of Incarceration				Months of Probation			
	Mean	Median	Standard Deviation	N	Mean	Median	Standard Deviation	N
11-12	4.3	3.0	3.5	1,588	38.8	36.0	18.3	1,588
12-13	4.9	3.9	3.9	1,624	38.9	36.0	20.4	1,624
13-14	5.0	3.9	3.9	1,445	40.7	36.0	19.9	1,445
14-15	4.8	3.3	3.8	1,390	40.2	36.0	18.5	1,390
15-16	4.9	3.6	3.7	1,366	40.9	36.0	19.8	1,366
16-17	5.3	3.9	4.0	1,480	41.3	36.0	20.5	1,480
17-18	5.2	3.9	3.9	1,402	40.6	36.0	18.6	1,402
18-19	5.6	4.0	4.2	1,393	40.9	36.0	20.1	1,393



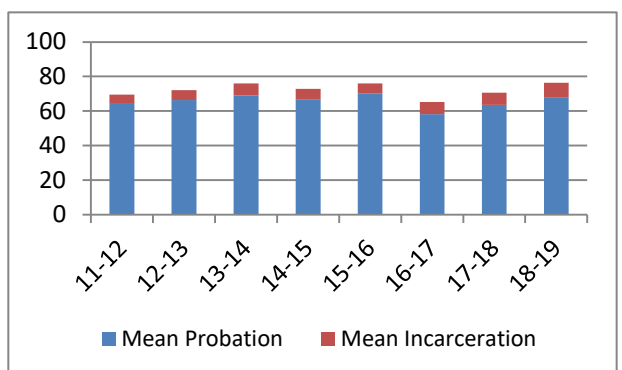
**Average Sentence Length - Class D - Standard Offenders**

Fiscal Year	Months of Incarceration				Months of Probation			
	Mean	Median	Standard Deviation	N	Mean	Median	Standard Deviation	N
11-12	4.2	3.0	3.4	1,461	36.2	36.0	15.2	1,461
12-13	4.8	3.5	3.9	1,509	36.3	36.0	17.4	1,509
13-14	4.7	3.3	3.8	1,291	36.9	36.0	15.6	1,291
14-15	4.7	3.0	3.7	1,267	37.3	36.0	15.2	1,267
15-16	4.6	3.0	3.6	1,198	35.9	36.0	12.9	1,198
16-17	4.9	3.7	3.8	1,288	37.0	36.0	14.3	1,288
17-18	4.9	3.9	3.8	1,206	36.1	36.0	13.1	1,206
18-19	5.1	3.9	4.0	1,194	35.5	36.0	12.9	1,194



**Average Sentence Length - Class D - Multiple Offenders**

Fiscal Year	Months of Incarceration				Months of Probation			
	Mean	Median	Standard Deviation	N	Mean	Median	Standard Deviation	N
11-12	5.3	4.0	3.8	111	64.2	60.0	20.7	111
12-13	5.7	5.0	4.1	92	66.4	69.6	20.6	92
13-14	6.9	6.0	4.3	128	69.0	72.0	18.2	128
14-15	6.4	6.0	4.8	110	66.5	67.5	16.6	110
15-16	6.0	5.9	3.7	131	70.0	69.0	19.4	131
16-17	7.1	6.0	4.3	145	58.2	51.3	18.4	145
17-18	7.2	6.0	4.4	170	63.5	60.0	18.6	170
18-19	8.2	9.5	4.1	165	68.1	66.2	20.3	165

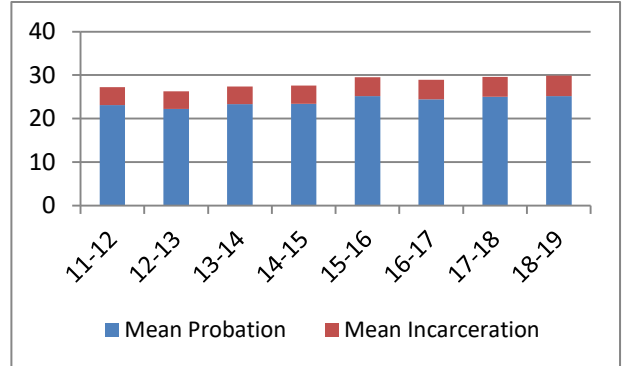


## Average Split Sentence Lengths in Months by Felony Class

Note: Column N indicates the number of felony convictions. Individual offenders can have multiple convictions. Incarceration includes life without parole and death sentences. Probation includes sentences to community corrections.

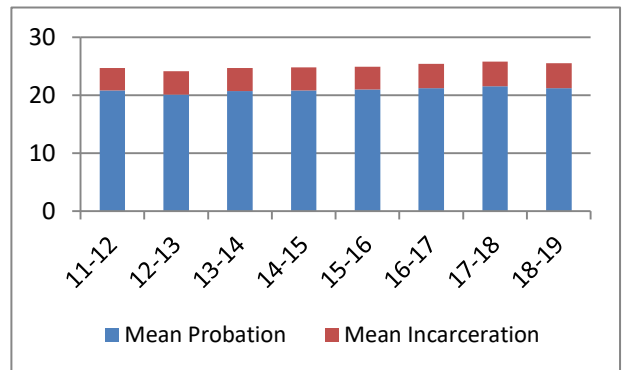
**Average Sentence Length - Class E - All Offenders**

Fiscal Year	Months of Incarceration				Months of Probation			
	Mean	Median	Standard Deviation	N	Mean	Median	Standard Deviation	N
11-12	4.1	3.0	3.2	1,790	23.1	23.0	13.6	1,790
12-13	4.1	3.0	3.1	1,747	22.2	22.0	14.1	1,747
13-14	4.1	3.0	3.1	1,434	23.3	24.0	13.8	1,434
14-15	4.2	3.0	3.2	1,522	23.4	24.0	13.2	1,522
15-16	4.3	3.0	3.3	1,627	25.2	24.0	17.1	1,627
16-17	4.5	3.0	3.5	1,786	24.4	24.0	13.0	1,786
17-18	4.6	3.9	3.4	1,820	25.0	24.0	13.3	1,820
18-19	4.7	3.9	3.5	1,895	25.2	24.0	14.2	1,895



**Average Sentence Length - Class E - Standard Offenders**

Fiscal Year	Months of Incarceration				Months of Probation			
	Mean	Median	Standard Deviation	N	Mean	Median	Standard Deviation	N
11-12	3.9	3.0	3.0	1,558	20.8	21.0	11.3	1,558
12-13	4.0	3.0	3.0	1,565	20.1	21.0	10.3	1,565
13-14	4.0	3.0	3.0	1,246	20.7	22.3	11.6	1,246
14-15	4.0	3.0	3.0	1,314	20.8	23.0	11.1	1,314
15-16	3.9	3.0	3.0	1,359	21.0	23.6	10.3	1,359
16-17	4.2	3.0	3.3	1,499	21.2	24.0	9.7	1,499
17-18	4.3	3.3	3.2	1,505	21.5	24.0	10.0	1,505
18-19	4.3	3.0	3.1	1,522	21.2	24.0	10.0	1,522



**Average Sentence Length - Class E - Multiple Offenders**

Fiscal Year	Months of Incarceration				Months of Probation			
	Mean	Median	Standard Deviation	N	Mean	Median	Standard Deviation	N
11-12	5.0	4.0	3.8	196	34.8	36.0	14.7	196
12-13	5.3	4.9	3.7	141	34.8	36.0	12.4	141
13-14	4.8	4.9	3.2	152	36.0	36.0	10.5	152
14-15	5.3	4.9	3.9	173	36.4	36.0	11.2	173
15-16	6.2	5.0	4.2	211	42.4	36.0	27.6	211
16-17	6.1	5.0	3.8	230	37.0	36.0	11.5	230
17-18	6.1	5.9	3.9	267	37.9	36.0	10.6	267
18-19	6.0	5.9	4.2	284	35.5	36.0	11.9	284

